



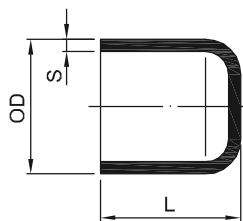
HD-PE

PIPE FITTING VALVE

HD-PE END CAP

elongated
for butt welding
molded from PE100

對接管帽
DFP CP1



OD (mm)	L (mm)	L ₁ (mm)	ØD (mm)	SDR27.6 ISO S13.3 PN6		SDR17 ISO S8 PN10		SDR11 ISO S5 PN16	
				Code	S (mm)	Code	S (mm)	Code	S (mm)
20	48.0	42.1	25.2	-	-	-	-	31-CP1-17-0020	2.0
25	50.0	42.0	30.2	-	-	-	-	31-CP1-17-0025	2.3
32	57.0	47.0	37.3	-	-	-	-	31-CP1-17-0032	2.9
40	64.0	52.2	46.0	-	-	-	-	31-CP1-17-0040	3.7
50	72.0	58.5	56.0	-	-	31-CP1-17-0050	3.0	31-CP1-17-0050	4.6
63	83.0	67.2	69.1	31-CP1-27-0063	2.3	31-CP1-17-0063	3.8	31-CP1-17-0063	5.8
75	89.5	74.0	82.5	31-CP1-27-0075	2.7	31-CP1-17-0075	4.5	31-CP1-17-0075	6.8
90	108.0	86.8	98.0	31-CP1-27-0090	3.3	31-CP1-17-0090	5.4	31-CP1-17-0090	8.2
110	123.0	95.8	119.5	31-CP1-27-0110	4.0	31-CP1-17-0110	6.6	31-CP1-17-0110	10.0
125	110.0	-	-	31-CP1-27-0125	4.6	31-CP1-17-0125	7.4	31-CP1-17-0125	11.4
140	144.0	-	-	31-CP1-27-0140	5.1	31-CP1-17-0140	8.3	31-CP1-17-0140	12.7
160	142.0	114.0	173.0	31-CP1-27-0160	5.8	31-CP1-17-0160	9.5	31-CP1-17-0160	14.6
180	192.0	-	-	31-CP1-27-0180	6.6	31-CP1-17-0180	10.7	31-CP1-17-0180	16.4
200	181.0	-	-	31-CP1-27-0200	7.3	31-CP1-17-0200	11.9	31-CP1-17-0200	18.2
225	210.0	-	-	31-CP1-27-0225	8.2	31-CP1-17-0225	13.4	31-CP1-17-0225	20.5
250	230.0	-	-	31-CP1-27-0250	9.1	31-CP1-17-0250	14.8	31-CP1-17-0250	22.7
280	257.0	-	-	31-CP1-27-0280	10.2	31-CP1-17-0280	16.6	31-CP1-17-0280	25.4
315	262.0	-	-	31-CP1-27-0315	11.4	31-CP1-17-0315	18.7	31-CP1-17-0315	28.6
355	130.0	-	-	31-CP1-27-0355	12.9	31-CP1-17-0355	21.1	31-CP1-17-0355	32.2
400	130.0	-	-	31-CP1-27-0400	14.5	31-CP1-17-0400	23.7	31-CP1-17-0400	36.3
450	130.0	-	-	31-CP1-27-0450	16.3	31-CP1-17-0450	26.7	31-CP1-17-0450	40.9
500	130.0	-	-	31-CP1-27-0500	18.1	31-CP1-17-0500	29.7	31-CP1-17-0500	45.4
560	130.0	-	-	31-CP1-27-0560	20.3	31-CP1-17-0560	33.2	31-CP1-17-0560	50.8
630	160.0	-	-	31-CP1-27-0630	22.8	31-CP1-17-0630	37.4	31-CP1-17-0630	57.2
710	160.0	-	-	31-CP1-27-0710	25.7	31-CP1-17-0710	42.1	31-CP1-17-0710	64.5
800	160.0	-	-	31-CP1-27-0800	29.0	31-CP1-17-0800	47.4	31-CP1-17-0800	72.8
900	180.0	-	-	31-CP1-27-0900	32.6	31-CP1-17-0900	53.3	31-CP1-17-0900	81.8
1000	180.0	-	-	31-CP1-27-1000	36.2	31-CP1-17-1000	59.3	-	-
1200	180.0	-	-	31-CP1-27-1200	43.5	31-CP1-17-1200	67.9	-	-