



PNEUMATIC ACTUATED BALL VALVE (SPRING RETURN TYPE)



CQ Series

單式氣動球閥

SOCKET CQ100 / THREAD CQ200 / FLANGED CQ300
Size: 1/2"-4"

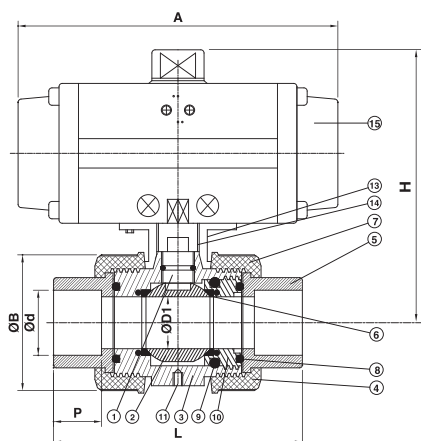
MATERIALS OF CONSTRUCTION

No.	Parts	Pcs	Materials	No.	Parts	Pcs	Materials
1	STEM	1	UPVC, PP, CPVC, PVDF	9	BODY O-RING	2	EPDM,VITON
2	BALL	1	UPVC, PP, CPVC, PVDF	10	SEAT CARRIER	1	UPVC, PP, CPVC, PVDF
3	BODY	1	UPVC, PP, CPVC, PVDF	11	BRASS INSERTS	4...15-50 8...65-100	BRASS
4	UNION NUT	2	UPVC, PP, CPVC, PVDF	12	FLANGE	2	UPVC, PP, CPVC, PVDF
5	END CONNECTOR	2	UPVC, PP, CPVC, PVDF	13	MOUNTING BRACKET	1	SUS304
6	SEAT	2	PTFE	14	STEM TRANSMIT HOUSING	1	SUS304
7	STEM O-RING	1...15-50 2...65-100	EPDM,VITON	15	PNEUMATIC ACTUATORS	1	ECRLD ALLMINUM ALLOY
8	SEAT CARRIER O-RING	1	EPDM,VITON				

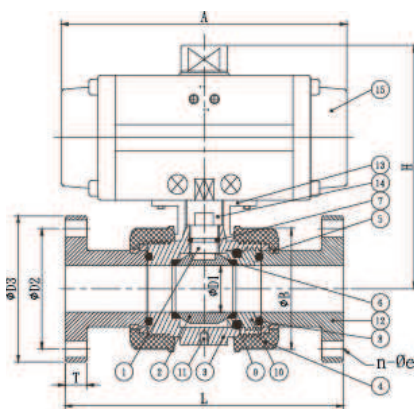
* 氣缸動作壓力(氣壓) : 最小5kg/cm²
最大8kg/cm²

DIMENSIONS TABLE

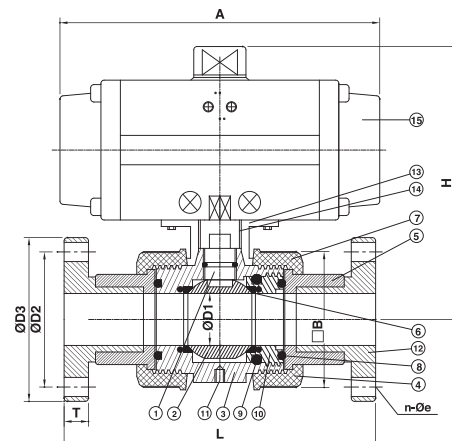
JIS																					Unit: mm		
Nominal Pipe Size	D1	D2	D3	d		e	n	P	L			H	H1	A	J	T	K	E	S	S1	Test press (kgf/cm ²)	Working press (kgf/cm ²)	
				Socket	Thread				Socket	Thread	Flange												
15(1/2")	15	70	95	22	PT1/2"	15	4	22.2	115	115	153	151.6	40	137	66	15	31		3/16"-24G	4	22.5	15	
20(3/4")	19	75	100	26	PT3/4"	15	4	25.4	126	126	165	157.5	40	137	66	15	37		1/4"-20G	4	22.5	15	
25(1")	25	90	125	32	PT 1"	19	4	28.6	144	144	189	162.0	40	137	66	17	40		1/4"-20G	4	22.5	15	
32(1-1/4")	38	100	135	38	PT1-1/4"	19	4	31.8	181	181	226	197.7	55	152	73	17	55		5/16"-18G	4	22.5	15	
40(1-1/2")	38	105	140	48	PT1-1/2"	19	4	34.9	181	181	226	197.7	55	152	73	19	55		5/16"-18G	4	22.5	15	
50(2")	48	120	155	60	PT 2"	19	4	38.1	202	202	252	208.3	55	152	85	21	68		5/16"-18G	4	22.5	15	
65(2-1/2")	65	140	175	76	PT2 1/2"	19	4	44.5	227	227	281	263.2	68	230	98	21	80	41	5/16"-18G	8	22.5	15	
80(3")	78	150	185	89	PT 3"	19	8	47.6	275	275	330	307.7	85	271	110	22	80	41	5/16"-18G	8	15	10	
100(4")	102	175	210	114	PT 4"	19	8	57.2	321	321	387	326.0	80	360	140	22	121	50	5/16"-18G	8	15	10	



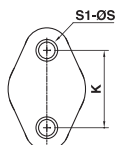
DN15~DN100
SOCKET & SCREW TYPE



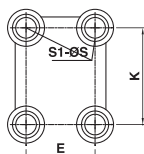
DN15~DN50
FLANGE TYPE



DN65~DN100
FLANGE TYPE

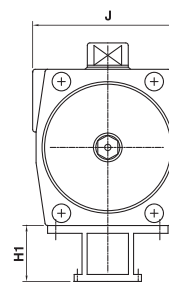


DN15~DN50



DN65~DN100

MOUNTING PAD



DIMENSIONS TABLE

ANSI																						Unit: inch		
Nominal Pipe Size	D1	D2	D3	d		e	n	P	L			H	H1	A	J	T	K	E	S	S1	Test press (lb/in ²)	Working press (lb/in ²)		
				Socket	Thread				Socket	Thread	Flange													
15(1/2")	0.59	2.375	3.500	0.848	NPT1/2"	0.625	4	0.875	4.528	4.528	6.024	5.97	1.57	5.39	2.60	0.59	1.22		3/16"-24G	4	353	235		
20(3/4")	0.748	2.750	3.875	1.058	NPT3/4"	0.625	4	1.000	4.960	4.960	6.496	6.20	1.57	5.39	2.60	0.59	1.45		1/4"-20G	4	353	235		
25(1")	0.98	3.125	4.250	1.325	NPT 1"	0.625	4	1.125	5.669	5.669	7.440	6.38	1.57	5.39	2.60	0.66	1.57		1/4"-20G	4	353	235		
32(1-1/4")	1.496	3.500	4.625	1.670	NPT1-1/4"	0.625	4	1.125	7.126	7.126	8.898	7.78	2.17	5.98	2.87	0.66	2.16		5/16"-18G	4	353	235		
40(1-1/2")	1.496	3.875	5.000	1.912	NPT1-1/2"	0.625	4	1.375	7.126	7.126	8.898	7.78	2.17	5.98	2.87	0.75	2.16		5/16"-18G	4	353	235		
50(2")	1.89	4.750	6.000	2.387	NPT 2"	0.75	4	1.500	7.953	7.953	9.921	8.20	2.17	5.98	2.87	0.83	2.67		5/16"-18G	4	353	235		
65(2-1/2")	2.56	5.500	7.000	2.889	NPT2 1/2"	0.75	4	1.750	8.937	8.937	11.063	10.36	2.68	9.06	3.86	0.83	3.15	1.61	5/16"-18G	8	225	150		
80(3")	3.07	6.000	7.500	3.515	NPT 3"	0.75	4	1.875	10.826	10.826	12.992	12.11	3.35	10.76	4.33	0.866	3.15	1.61	5/16"-18G	8	225	150		
100(4")	4.01	7.500	9.000	4.518	NPT 4"	0.75	8	2.250	12.638	12.638	15.236	12.83	3.15	14.17	6.10	0.866	4.76	1.97	5/16"-18G	8	225	150		

DIN																			Unit: mm			
Nominal Pipe Size	D1	D2	D3	d		e	n	P	L			H	H1	A	J	T	K	E	S	S1	Test press (bar)	Working press (bar)
				Socket	Thread				Socket	Thread	Flange											
15(1/2")	15	65	95	20	R 1/2"	14	4	16.0	115	115	153	151.6	40	137	66	15	31		3/16"-24G	4	24	16
20(3/4")	19	75	105	25	R 3/4"	14	4	18.5	126	126	165	157.5	40	137	66	15	37		1/4"-20G	4	24	16
25(1")	25	85	115	32	R 1"	14	4	22.0	144	144	189	162.0	40	137	66	17	40		1/4"-20G	4	24	16
32(1-1/4")	38	100	140	40	R 1-1/4"	18	4	26.0	181	181	226	197.7	55	152	73	17	55		5/16"-18G	4	24	16
40(1-1/2")	38	110	150	50	R 1-1/2"	18	4	31.0	181	181	226	197.7	55	152	73	19	55		5/16"-18G	4	24	16
50(2")	48	120	165	63	R 2"	18	4	37.5	202	202	252	208.3	55	152	85	21	68		5/16"-18G	4	24	16
65(2-1/2")	65	145	185	75	R 2 1/2"	18	4	43.5	227	227	281	263.2	68	230	110	21	80	41	5/16"-18G	8	15	10
80(3")	78	160	200	90	R 3"	18	8	51.0	275	275	330	307.7	85	271	110	22	80	41	5/16"-18G	8	15	10
100(4")	102	180	220	110	R 4"	18	8	61.0	321	321	387	362.0	80	360	140	22	121	50	5/16"-18G	8	15	10

※ 本尺表以 PVC 材質為準，本表試壓值以 PVC、PVDF 材質為基準，PP 材質試壓值為本表試壓值之 70%。

※ 法蘭長度公差依據 EN558-1:1995 標準

The dimension table is calculated based on PVC material.
※ The valve of test pressure is calculated based on PVC PVDF materials.
The valve of test pressure for PP material is 70% based on the table.
The flanged length tolerance is according to EN558-1:1995.