



BALL FOOT VALVE (VERTICAL TYPE)



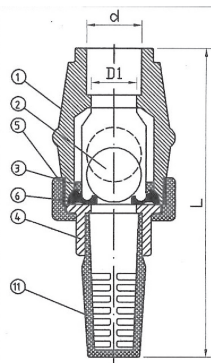
JF Series

福特球型凡而（直式）

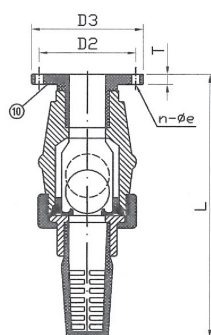
SOCKET JF100/THREAD JF200/FLANGED JF300
 SIZE:1/2"-10"

MATERIALS OF CONSTRUCTION

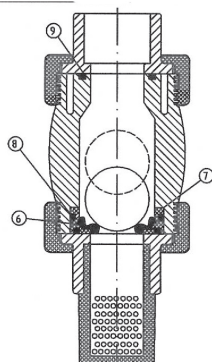
No.	Parts	Pcs.	Materials
1	Body	1	UPVC,PP,PPG,CPVC,PVDF
2	Ball	1	UPVC,PPG,CPVC,PVDF
3	Washer	1	UPVC,PP,CPVC,PVDF
4	Connector	1/2	UPVC,PP,CPVC,PVDF
5	Union Nut	1/2	UPVC,PP,CPVC,PVDF
6	Seat	1	EPDM,VITON
7	Seat Carrier	1	UPVC,PP,CPVC,PVDF
8	Seat Carrier O'ring	1	EPDM,VITON
9	Solid End O'ring	1	EPDM,VITON
10	Flanged End	1	UPVC,PP,PPG,CPVC,PVDF
11	Screen	1	UPVC,PP,CPVC,PVDF



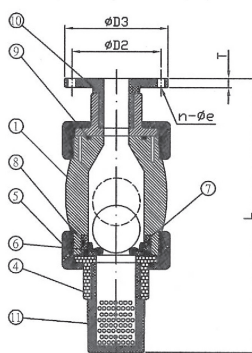
15A(1/2")~50A(2")



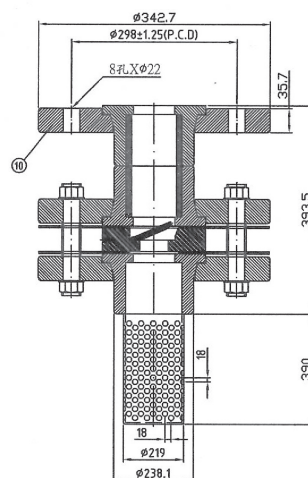
FLANGED TYPE
15A(1/2")~50A(2")



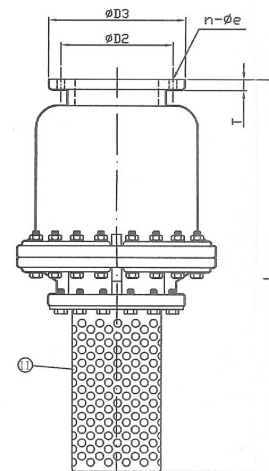
65A(2-1/2")~100A(4")



FLANGED TYPE
65A(2-1/2")~100A(4")



FLANGED TYPE
200A(8")



FLANGED TYPE
150A(6") , 250A(10")

SPECIFICATIONS:

1. Test Press: ① {15mm(1/2")~100mm(4") : 10.5kgf/cm ² (bar) (155lb/in ²) }	2. Working Press: ① {15mm(1/2")~100mm(4") : 7kgf/cm ² (bar) (150lb/in ²) }
② {150mm(6") : 7kgf/cm ² (bar) (105lb/in ²) }	② {150mm(6") : 4.9kgf/cm ² (bar) (75lb/in ²) }
③ {200mm(8") : 5kgf/cm ² (bar) (75lb/in ²) }	③ {200mm(10") : 3.5kgf/cm ² (bar) (52lb/in ²) }
④ {250mm(10") : 3.5kgf/cm ² (bar) (52.8lb/in ²) }	④ {250mm(10") : 2.1kgf/cm ² (bar) (31lb/in ²) }

DIMENSIONS TABLE

Standards Nom. size DN-Inch	JIS										Unit:mm				ANSI										Unit:inch				DIN										Unit:mm			
	D1	d		D2	D3	n	øe	L			T	D1	d		D2	D3	n	øe	L			T	D1	d		D2	D3	n	øe	L			T									
		Screw	Socket					Screw	Socket	Flange			Screw	Socket					Flange	Screw	Socket			Flange	Screw					Socket	Flange	Screw		Socket	Flange							
15(1/2")	15	PT	22	70	95	4	15	138	138	175	16	0.59	NPT	0.84	2.375	3.500	4	0.63	5.43	5.43	6.89	0.62	15	R1/2	20	65	95	4	14	138	138	175	16									
20(3/4")	20	PT	26	75	100	4	15	164	164	202	16	0.79	NPT	1.05	2.750	3.875	4	0.63	6.45	6.45	7.95	0.62	20	R3/4	25	75	105	4	14	164	164	202	16									
25(1")	26	PT	32	90	125	4	19	180	180	224	16	1.02	NPT	1.32	3.125	4.250	4	0.63	7.08	7.08	8.82	0.62	26	R1	32	85	115	4	14	180	180	224	16									
32(1-1/4")	36	PT	38	100	135	4	19	226	226	271	18	1.42	NPT	1.67	3.500	4.625	4	0.63	8.89	8.89	10.67	0.70	36	R1-1/4	40	100	140	4	18	226	226	271	18									
40(1-1/2")	36	PT	48	105	145	4	19	226	226	272	18	1.42	NPT	1.91	3.875	5.000	4	0.63	8.89	8.89	10.71	0.70	36	R1-1/2	50	110	150	4	18	226	226	272	18									
50(2")	40	PT	60	120	155	4	19	254	254	306	21	1.58	NPT	2.38	4.750	6.000	4	0.75	10.0	10.0	12.05	0.82	40	R2	63	125	165	4	18	254	254	306	21									
65(2-1/2")	65	PT	76	140	175	4	19	305	305	359	20	2.56	NPT	2.88	5.500	7.000	4	0.75	12.0	12.0	14.13	0.78	65	R2-1/2	75	145	185	4	18	305	305	359	20									
80(3")	80	PT	89	150	185	8	19	373	373	429	23	3.15	NPT	3.51	6.000	7.500	4	0.75	14.68	14.68	16.89	0.90	80	R3	90	160	200	8	18	373	373	429	23									
100(4")	100	PT	114	175	210	8	19	488	488	546	23	3.94	NPT	4.51	7.500	9.000	8	0.75	19.21	19.21	21.5	0.90	100	R4	100	180	220	8	18	488	488	546	23									
150(6")	150	-	-	240	280	8	23	-	-	790	23	-	-	-	9.500	11.000	8	0.88	-	-	31.10	0.90	150	-	-	240	285	8	23	-	-	790	23									
200(8")	200	-	-	290	330	12	23	-	-	783.5	35.7	-	-	-	13.490	13.500	8	0.88	-	-	30.84	-	-	-	-	295	330	8	23	-	-	783.5	35.7									
250(10")	250	-	-	355	400	12	25	-	-	1190	25	-	-	-	14.250	16.000	12	1.00	-	-	46.85	0.98	250	-	-	350	395	12	25	-	-	1190	25									

※ 本尺表以 PVC 材質為準，本表試壓值以 PVC、PVDF 材質為準，PP 材質試壓值為本表試壓值之 70%。

※ 法蘭長度公差依據 EN558-1:1995 標準

The dimension table is calculated based on PVC material.

※ The valve of test pressure is calculated based on PVC PVDF materials.

The valve of test pressure for PP material is 70% based on the table.

The flanged length tolerance is according to EN558-1:1995.