



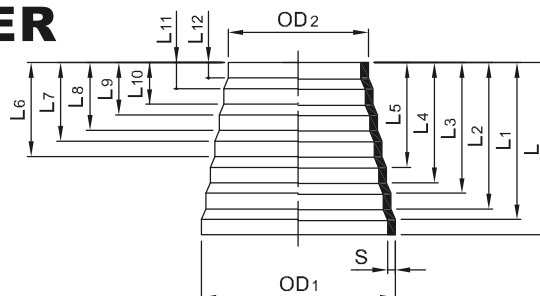
PVDF/PVDF(FRP COATED)

PIPE FITTING VALVE

PVDF REDUCER CONCENTRIC

Butt welding
molded from PVDF

對接塔型大小頭
DFP TW1



OD1/OD2 (mm)	L ₁ (mm)	L ₂ (mm)	L ₃ (mm)	L ₄ (mm)	L ₅ (mm)	L ₆ (mm)	L ₇ (mm)	L ₈ (mm)	L ₉ (mm)	L ₁₀ (mm)	L ₁₁ (mm)	L ₁₂ (mm)
63/16	70.5	62.5	53.5	46.5	38.5	33.0	25.0	21	15	12	7	5
75/32	62.5	54.5	45.5	37.5	28.5	21.5	13.5	8	-	-	-	-
110/63	57.0	47.0	36.0	28.0	17.0	9.0	-	-	-	-	-	-
125/75	63.0	53.0	40.0	30.0	19.0	11.0	-	-	-	-	-	-
160/110	74.0	62.0	48.0	37.0	23.0	13.0	-	-	-	-	-	-
225/160	87.0	71.0	55.0	42.0	26.0	14.0	-	-	-	-	-	-
315/225	109.0	89.0	70.0	54.0	35.0	19.0	-	-	-	-	-	-
450/315	148.0	118.0	92.0	68.0	44.0	24.0	-	-	-	-	-	-
630/450	214.0	178.0	132.0	100.0	62.0	32.0	-	-	-	-	-	-

PN6	16	20	25	32	40	50	63	75	90	110	125	140	160	180	200	225	250	280	315	355	400	450	500	560	630
S1	-	-	-	-	-	-	2.0	2.3	2.8	3.4	3.9	4.3	4.9	5.5	6.2	6.9	7.7	8.6	9.7	10.9	12.3	13.7	15.2	17.0	19.1
PN10	16	20	25	32	40	50	63	75	90	110	125	140	160	180	200	225	250	280	315	355	400	450	500	560	630
S1	1.9	1.9	1.9	2.4	2.4	3.0	3.0	3.6	4.3	5.3	6.0	6.7	7.7	8.6	9.6	10.8	11.9	13.4	15.0	16.9	19.0	21.4	23.8	26.7	30.0

OD1/OD2 (mm)	L (mm)	SDR33 ISO S16 PN10	SDR21 ISO S10 PN16
		Code	Code
63/16	79.5±2	51-TW1-33-063016	51-TW1-21-063016
75/32	73.5±2	51-TW1-33-075032	51-TW1-21-075032
110/63	70.0±2	51-TW1-33-110063	51-TW1-21-110063
125/75	77.0±2	51-TW1-33-125075	51-TW1-21-125075
160/110	88.0±2	51-TW1-33-160110	51-TW1-21-160110
225/160	106.0±3	51-TW1-33-225160	51-TW1-21-225160
315/225	133.0±3	51-TW1-33-315225	51-TW1-21-315225
450/315	180.0±4	51-TW1-33-450315	51-TW1-21-450315
630/450	276.0±4	51-TW1-33-630450	51-TW1-21-630450