



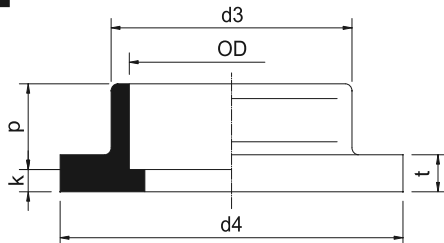
PVDF/PVDF(FRP COATED)

PIPE FITTING VALVE

PVDF FLANGE ADAPTORS

for socket welding
molded from PVDF

套接中間法蘭
DFP FT2

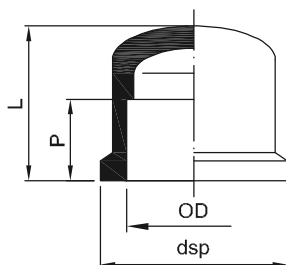


OD (mm)	d3 (mm)	d4 (mm)	t (mm)	k (mm)	P (mm)	L (mm)	SDR 7 PN20	
							Code	Weight (kg/Pc.)
20	27.5	44.6	8.5	3.7	15.6	19.3	21-FT2-07-0020	0.04
25	33.0	57.4	9.2	3.4	18.3	21.7	21-FT2-07-0025	0.06
32	41.4	67.3	10.6	4.0	20.0	24.0	21-FT2-07-0032	0.08
40	50.5	77.2	10.3	5.0	22.5	27.5	21-FT2-07-0040	0.10
50	61.0	87.2	13.5	5.4	24.2	29.6	21-FT2-07-0050	0.14
63	75.8	100.7	13.7	5.0	28.0	33.0	21-FT2-07-0063	0.18
75	90.2	120.3	16.3	5.3	32.3	37.6	21-FT2-07-0075	0.30
90	107.8	136.0	17.5	5.2	35.3	40.5	21-FT2-07-0090	0.39
110	129.8	154.7	18.5	7.1	41.4	48.5	21-FT2-07-0110	0.56

PVDF END CAP

for socket welding
molded from PVDF

套接管帽
DFP CP2



OD (mm)	dsp ^{±1.5} (mm)	L ^{±1.5} (mm)	P (mm)	SDR 7 PN20	
				Code	Weight (kg/Pc.)
16	24.1	23.9	14.5	51-CP2-07-0016	0.012
20	29.2	26.9	15.5	51-CP2-07-0020	0.018
25	35.1	30.3	17.0	51-CP2-07-0025	0.029
32	43.4	35.0	19.5	51-CP2-07-0032	0.046
40	52.1	39.0	21.6	51-CP2-07-0040	0.069
50	64.0	49.0	24.0	51-CP2-07-0050	0.119
63	81.0	58.5	28.2	51-CP2-07-0063	0.236
75	92.0	65.5	33.0	51-CP2-07-0075	0.287
90	112.5	76.0	37.0	51-CP2-07-0090	0.535
110	132.5	92.0	42.7	51-CP2-07-0110	0.806