



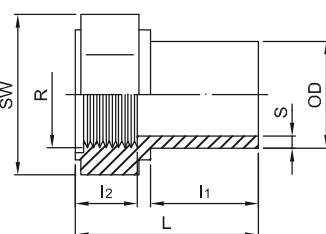
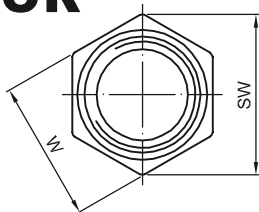
PVDF/PVDF(FRP COATED)

PIPE FITTING VALVE

PVDF ADAPTOR

with female thread
for butt welding
molded from PVDF

對接內牙閥接頭
DFP FD1

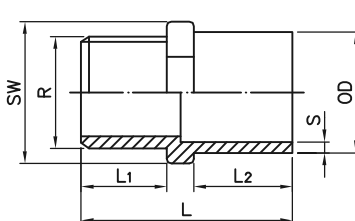
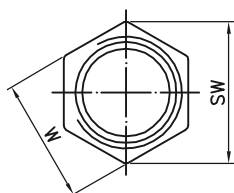


OD (mm)	S (mm)	L ^{±2.5} (mm)	L ₁ ^{±1.5} (mm)	L ₂ ^{±1.5} (mm)	R	WxSW ^{±1.5} (mm)	SDR21 ISO S10 PN16
							Code
20	1.9	45.7	21.4	16.2	1/2" BSP	32.0x35.0	51-FD1-21-0020
25	1.9	50.8	25.5	17.0	3/4" BSP	40.0x44.6	51-FD1-21-0025
32	2.4	59.0	30.5	20.0	1" BSP	45.6x50.5	51-FD1-21-0032
40	2.4	62.5	30.0	24.0	1-1/4" BSP	54.0x59.5	51-FD1-21-0040
50	3.0	69.0	34.5	24.6	1-1/2" BSP	69.0x76.2	51-FD1-21-0050
63	3.0	75.0	36.5	28.2	2" BSP	83.6x93.0	51-FD1-21-0063

PVDF ADAPTOR

with male thread
for butt welding
molded from PVDF

對接外牙閥接頭
DFP MD1



OD (mm)	S (mm)	L ^{±2.5} (mm)	L ₁ ^{±1.5} (mm)	L ₂ ^{±1.5} (mm)	R	WxSW ^{±1.5} (mm)	SDR21 ISO S10 PN16
							Code
20	1.9	46.5	18.5	20.0	1/2" BSP	21.8x24.0	51-MD1-21-0020
25	1.9	51.8	20.5	23.0	3/4" BSP	26.7x29.6	51-MD1-21-0025
32	2.4	61.8	24.2	28.5	1" BSP	35.6x39.6	51-MD1-21-0032
40	2.4	67.7	27.2	30.0	1-1/4" BSP	45.7x50.7	51-MD1-21-0040
50	3.0	75.0	29.2	33.5	1-1/2" BSP	55.0x61.0	51-MD1-21-0050
63	3.0	80.0	32.0	35.7	2" BSP	64.3x71.3	51-MD1-21-0063