



# PVDF/PVDF(FRP COATED)

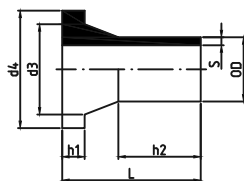
# PIPE FITTING VALVE

## PVDF STUB FLANGE

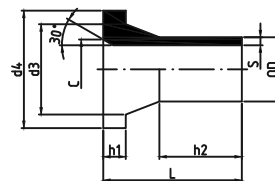
for butt welding  
molded from PVDF

對接中間法蘭

DFP FT1



OD20 ~ OD50



OD63 ~ OD630



OD (mm)	d <sub>3</sub> (mm)	d <sub>4</sub> (mm)	L (mm)	h <sub>2</sub> (mm)	SDR33 ISO S16 PN10			SDR21 ISO S10 PN16		
					Code	S (mm)	h <sub>1</sub> (mm)	Code	S (mm)	h <sub>1</sub> (mm)
20	28	45	50	29	-	-	-	51-FT1-21-0020	1.9	7
25	34	58	50	29	-	-	-	51-FT1-21-0025	1.9	9
32	41	68	50	26	-	-	-	51-FT1-21-0032	2.4	10
40	51	78	50	23	-	-	-	51-FT1-21-0040	2.4	11
50	61	90.2	50	23	-	-	-	51-FT1-21-0050	3.0	12
63	73.6	102	50	19	51-FT1-33-0063	2.0	14	51-FT1-21-0063	3.0	14
75	87.5	122	50	19	51-FT1-33-0075	2.3	16	51-FT1-21-0075	3.6	16
90	104	138	80	41	51-FT1-33-0090	2.8	17	51-FT1-21-0090	4.3	17
110	128.5	158	80	38	51-FT1-33-0110	3.4	18	51-FT1-21-0110	5.3	18
125	135	158	175	102	51-FT1-33-0125	3.9	25.5	51-FT1-21-0125	6.0	25.5
140	155	191	197.1	129.7	51-FT1-33-0140	4.3	27.4	51-FT1-21-0140	6.7	27.4
160	175.8	211.8	160.5	110	51-FT1-33-0160	4.9	26.2	51-FT1-21-0160	7.7	26.2
180	186	217	180	127	51-FT1-33-0180	5.5	26.5	51-FT1-21-0180	8.6	26.5
200	229	268	213	144	51-FT1-33-0200	6.2	31.5	51-FT1-21-0200	9.6	31.5
225	237	268	213	144	51-FT1-33-0225	6.9	33	51-FT1-21-0225	10.8	33
250	284	320	273	205	51-FT1-33-0250	7.7	34	51-FT1-21-0250	11.9	34
280	292	320	375	303.5	51-FT1-33-0280	8.6	32	51-FT1-21-0280	13.4	32
315	334	371	379	303.5	51-FT1-33-0315	9.7	35	51-FT1-21-0315	15.0	35
355	373	430	175	-	51-FT1-33-0355	10.9	40	-	-	-
400	427	482	175	-	51-FT1-33-0400	12.3	40	-	-	-
450	514	585	180	-	51-FT1-33-0450	13.7	50	-	-	-
500	530	585	180	-	51-FT1-33-0500	15.2	50	-	-	-
560	615	685	180	-	51-FT1-33-0560	17.0	55	-	-	-
630	642	685	200	-	51-FT1-33-0630	19.1	55	-	-	-