



PVDF/PVDF(FRP COATED)

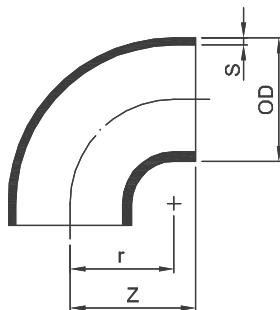
PIPE FITTING VALVE

PVDF BEND 90°

for butt welding
molded from PVDF

對接90°彎

DFP L90



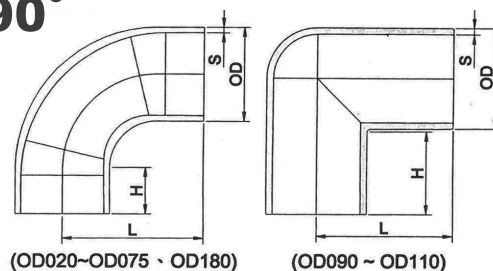
OD (mm)	Z (mm)	r (mm)	SDR 33 ISO S16 PN10		SDR 21 ISO S10 PN16	
			Code	S (mm)	Code	S (mm)
20	32	27.5	-	-	51-L90-21-0020	1.9
25	38	34.0	-	-	51-L90-21-0025	1.9
32	43	38.5	-	-	51-L90-21-0032	2.4
40	46	43.0	-	-	51-L90-21-0040	2.4
50	58	52.0	-	-	51-L90-21-0050	3.0
63	70	65.0	51-L90-33-0063	2.0	51-L90-21-0063	3.0
75	85	78.5	51-L90-33-0075	2.3	51-L90-21-0075	3.6
90	100	92.5	51-L90-33-0090	2.8	51-L90-21-0090	4.3
110	124	115.0	51-L90-33-0110	3.4	51-L90-21-0110	5.3

PVDF ELONGATED BEND 90°

Elongated
for butt welding
molded from PVDF

對接長型 90°彎頭

DFP L93



OD (mm)	Z (mm)	r (mm)	SDR 33 ISO S16 PN10		SDR 21 ISO S10 PN16	
			Code	S (mm)	Code	S (mm)
20	64.0	41.0	-	-	51-L93-21-0020	1.9
25	51.3	26.1	-	-	51-L93-21-0025	1.9
32	58.3	26.1	-	-	51-L93-21-0032	2.4
40	92.5	52.5	-	-	51-L93-21-0040	2.4
50	108.5	58.5	-	-	51-L93-21-0050	3.0
63	129.5	69.7	51-L93-33-0063	2.0	51-L93-21-0063	3.0
75	150.0	72.0	51-L93-33-0075	2.3	51-L93-21-0075	3.6
90	129.0	84.0	51-L93-33-0090	2.8	51-L93-21-0090	4.3
110	149.0	91.0	51-L93-33-0110	3.4	51-L93-21-0110	5.3
180	290.5	121.0	51-L93-33-0180	5.5	51-L93-21-0180	8.6