



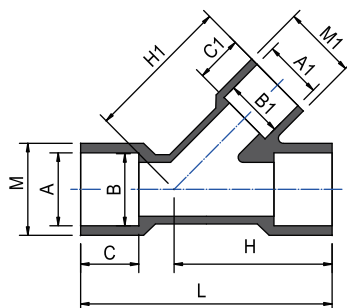
# UPVC / CPVC PIPE FITTING VALVE

## WYE

(Soc\*Soc\*Soc)

Y型三通

(ANSI SCH80)



單位 (unit) : inch

Size	A	B	A1	B1	C	C1	H	H1	M	M1	L	UPVC code no.	CPVC code no.
1/2	27/32	27/32	27/32	27/32	7/8	7/8	2	2-5/64	1-7/32	1-7/32	3-15/64	11-TY3-08-0015	41-TY3-08-0015
3/4	1-3/16	1-1/16	1-3/16	1-1/16	1	1	2-19/64	2-3/8	1-29/64	1-29/64	3-45/64	11-TY3-08-0020	41-TY3-08-0020
1	1-21/64	1-5/16	1-21/64	1-5/16	1-1/8	1-1/8	2-5/64	2-7/8	1-25/32	1-25/32	4-11/32	11-TY3-08-0025	41-TY3-08-0025
1-1/4	1-43/64	1-21/32	1-43/64	1-21/32	1-1/4	1-1/4	3-23/64	3-7/16	2-5/32	2-5/32	5-3/64	11-TY3-08-0032	41-TY3-08-0032
1-1/2	1-29/32	1-29/32	1-29/32	1-29/32	1-3/8	1-3/8	3-15/16	3-15/16	2-15/32	2-15/32	5-3/4	11-TY3-08-0040	41-TY3-08-0040
2	2-25/64	2-3/8	2-25/64	2-3/8	1-1/2	1-1/2	4-3/4	4-41/64	3-1/32	3-1/32	6-57/64	11-TY3-08-0050	41-TY3-08-0050
2-1/2	2-57/64	2-7/8	2-57/64	2-7/8	1-3/4	1-3/4	5-25/32	5-25/32	3-1/2	3-1/2	8-1/4	11-TY3-08-0065	41-TY3-08-0065
3	3-33/64	3-1/2	3-33/64	3-1/2	1-7/8	1-7/8	6-13/16	6-13/16	4-19/64	4-19/64	9-5/8	11-TY3-08-0080	41-TY3-08-0080
4	4-33/64	4-1/2	4-33/64	4-1/2	2-1/4	2-1/4	8-1/4	8-1/4	5-23/64	5-23/64	11-11/16	11-TY3-08-0100	41-TY3-08-0100
4x4x2	4-33/64	4-1/2	2-25/64	2-3/8	2-1/4	1-1/2	8-1/4	8-1/4	5-23/64	3-1/32	11-11/16	11-TY3-08-100050	41-TY3-08-100050
4x4x3	4-33/64	4-1/2	3-33/64	3-1/2	2-1/4	1-7/8	8-3/64	7-7/8	5-23/64	4-19/64	10-19/64	11-TY3-08-100080	41-TY3-08-100080
6	6-41/64	6-5/8	6-41/64	6-5/8	3	3	11-3/64	11-25/32	7-23/32	7-23/32	15-7/8	11-TY3-08-0150	41-TY3-08-0150
△ 6x6x2	6-41/64	6-5/8	2-25/64	2-3/8	3	1-1/2	11-3/64	11-25/32	7-23/32	3-1/32	13-5/16	11-TY3-08-150050	41-TY3-08-150050
△ 6x6x3	6-41/64	6-5/8	3-33/64	3-1/2	3	1-7/8	11-3/64	11-25/32	7-23/32	4-19/64	13-5/16	11-TY3-08-150080	41-TY3-08-150080
6x6x4	6-41/64	6-5/8	4-33/64	4-1/2	3	2-1/4	10-5/16	10-5/16	7-23/32	5-23/64	13-5/16	11-TY3-08-150100	41-TY3-08-150100
8	8-21/32	8-5/8	8-21/32	8-5/8	4	4	17-1/8	17-11/64	10-5/32	10-5/32	23-5/8	11-TY3-08-0200	41-TY3-08-0200
△ 8x8x2	8-21/32	8-5/8	2-25/64	2-3/8	4-11/32	1-1/2	17-1/8	17-11/64	10-5/32	3-1/32	23-5/8	11-TY3-08-200050	41-TY3-08-200050
△ 8x8x3	8-21/32	8-5/8	3-33/64	3-1/2	4-11/32	1-7/8	17-1/8	17-11/64	10-5/32	4-19/64	23-5/8	11-TY3-08-200080	41-TY3-08-200080
△ 8x8x4	8-21/32	8-5/8	4-33/64	4-1/2	4-11/32	2-1/4	17-1/8	17-11/64	10-5/32	5-23/64	23-5/8	11-TY3-08-200100	41-TY3-08-200100
△ 8x8x6	8-21/32	8-5/8	6-41/64	6-5/8	4-11/32	3	17-1/8	17-11/64	10-5/32	7-23/32	23-5/8	11-TY3-08-200150	41-TY3-08-200150
* 10	10-25/32	10-3/4	10-25/32	10-3/4	5-33/64	5-33/64	22	23-1/2	12-3/64	12-3/64	33	11-TY3-08-0250	41-TY3-08-0250
* 10x10x3	10-25/32	10-3/4	3-33/64	3-1/2	5	7	14-21/64	18-1/2	12-3/64	4-19/64	21-5/64	11-TY3-08-250080	41-TY3-08-250080
* 10x10x4	10-25/32	10-3/4	4-33/64	4-1/2	5	2-1/4	14-21/64	18-1/2	12-3/64	5-23/64	21-5/64	11-TY3-08-250100	41-TY3-08-250100
* 10x10x6	10-25/32	10-3/4	6-41/64	6-5/8	5	3	14-21/64	18-1/2	12-3/64	7-41/64	21-5/64	11-TY3-08-250150	41-TY3-08-250150
* 10x10x8	10-25/32	10-3/4	8-21/32	8-5/8	5	4	16-7/64	21-17/32	12-3/64	10-5/32	25	11-TY3-08-250200	41-TY3-08-250200
* 12	12-25/32	12-3/4	12-25/32	12-25/32	5-63/64	5-63/64	25-25/32	26-31/32	14-7/32	14-7/32	38	11-TY3-08-0300	41-TY3-08-0300
* 12x12x2	12-25/32	12-3/4	2-25/64	2-3/8	6-7/64	1-1/2	16-11/32	17-19/32	14-7/32	3-1/32	24-51/64	11-TY3-08-300050	41-TY3-08-300050
* 12x12x3	12-25/32	12-3/4	3-33/64	3-1/2	6-7/64	1-7/8	16-11/32	17-19/32	14-7/32	4-19/64	24-51/64	11-TY3-08-300080	41-TY3-08-300080
* 12x12x4	12-25/32	12-3/4	4-33/64	4-1/2	6-7/64	2-1/4	16-11/32	17-19/32	14-7/32	5-23/64	24-51/64	11-TY3-08-300100	41-TY3-08-300100
* 12x12x6	12-25/32	12-3/4	6-21/32	6-5/8	6-7/64	3	17-11/32	26-3/8	14-7/32	7-23/32	26-49/64	11-TY3-08-300150	41-TY3-08-300150
* 12x12x8	12-25/32	12-3/4	8-21/32	8-5/8	6-7/64	4	16-23/64	23-57/64	14-7/32	10-5/32	24-51/64	11-TY3-08-300200	41-TY3-08-300200
* 12x12x10	12-25/32	12-3/4	10-25/32	10-3/4	6-7/64	5	18-21/64	26-25/32	14-7/32	12-3/64	28-47/64	11-TY3-08-300250	41-TY3-08-300250
* 14	14-1/32	13-29/32	14-1/32	13-29/32	7	7	30-1/2	30-1/2	15-1/2	15-1/2	47	11-TY3-08-0350	41-TY3-08-0350
* 16	16-2/32	15-29/32	16-2/32	15-29/32	8	8	33-3/8	33-3/8	17-3/4	17-3/4	50-3/4	11-TY3-08-0400	41-TY3-08-0400
* 18	18-2/32	17-29/32	18-2/32	17-29/32	9	9	37	37	19-7/8	19-7/8	56	11-TY3-08-0450	41-TY3-08-0450
* 20	20-2/32	19-29/32	20-3/32	19-29/32	10	10	41-5/8	41-5/8	22-1/8	22-1/8	63-1/4	11-TY3-08-0500	41-TY3-08-0500
* 24	24-1/8	23-15/16	24-1/8	23-15/16	12	12	50-1/2	50-1/2	26-1/2	26-1/2	76-1/2	11-TY3-08-0600	41-TY3-08-0600

△轉接品 (Transition) \*手工製品 (Fabricated)