



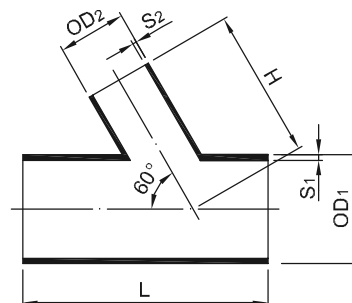
HD-PE

PIPE FITTING VALVE

HD-PE REDUCED 60° Y-TEE

(Fabricated)
with reduced branch
for butt welding
molded from PE100

手工對接異徑60° Y型三通
DFP TY9



OD ₁ /OD ₂ (mm)	H (mm)	L (mm)	SDR27.6 ISO S13.3 PN6		SDR17 ISO S8 PN10		SDR11 ISO S5 PN16	
			Code	S ₁ /S ₂ (mm)	Code	S ₁ /S ₂ (mm)	Code	S ₁ /S ₂ (mm)
110-32	153	237	-	-	31-TY9-17-110032	6.6/2.0	31-TY9-11-110032	10.0/2.9
110-40	155	246	-	-	31-TY9-17-110040	6.6/2.4	31-TY9-11-110040	10.0/3.7
110-50	158	258	-	-	31-TY9-17-110050	6.6/3.0	31-TY9-11-110050	10.0/4.6
110-63	162	273	31-TY9-27-110063	4.0/2.3	31-TY9-17-110063	6.6/3.8	31-TY9-11-110063	10.0/5.8
110-75	165	287	31-TY9-27-110075	4.0/2.7	31-TY9-17-110075	6.6/4.5	31-TY9-11-110075	10.0/6.8
110-90	169	304	31-TY9-27-110090	4.0/3.3	31-TY9-17-110090	6.6/5.4	31-TY9-11-110090	10.0/8.2
125-40	174	271	-	-	31-TY9-17-125040	7.4/2.4	31-TY9-11-125040	11.4/3.7
125-50	177	283	-	-	31-TY9-17-125050	7.4/3.0	31-TY9-11-125050	11.4/4.6
125-63	180	298	31-TY9-27-125063	4.6/2.3	31-TY9-17-125063	7.4/3.8	31-TY9-11-125063	11.4/5.8
125-75	184	312	31-TY9-27-125075	4.6/2.7	31-TY9-17-125075	7.4/4.5	31-TY9-11-125075	11.4/6.8
125-90	188	329	31-TY9-27-125090	4.6/3.3	31-TY9-17-125090	7.4/5.4	31-TY9-11-125090	11.4/8.2
125-110	194	352	31-TY9-27-125110	4.6/4.0	31-TY9-17-125110	7.4/6.6	31-TY9-11-125110	11.4/10.0
140-50	185	283	-	-	31-TY9-17-140050	8.3/3.0	31-TY9-11-140050	12.7/4.6
140-63	189	298	31-TY9-27-140063	5.1/2.3	31-TY9-17-140063	8.3/3.8	31-TY9-11-140063	12.7/5.8
140-75	192	312	31-TY9-27-140075	5.1/2.7	31-TY9-17-140075	8.3/4.5	31-TY9-11-140075	12.7/6.8
140-90	197	329	31-TY9-27-140090	5.1/3.3	31-TY9-17-140090	8.3/5.4	31-TY9-11-140090	12.7/8.2
140-110	203	352	31-TY9-27-140110	5.1/4.0	31-TY9-17-140110	8.3/6.6	31-TY9-11-140110	12.7/10.0
140-125	207	369	31-TY9-27-140125	5.1/4.6	31-TY9-17-140125	8.3/7.4	31-TY9-11-140125	12.7/11.4
160-63	211	323	31-TY9-27-160063	5.8/2.3	31-TY9-17-160063	9.5/3.8	31-TY9-11-160063	14.6/5.8
160-75	214	337	31-TY9-27-160075	5.8/2.7	31-TY9-17-160075	9.5/4.5	31-TY9-11-160075	14.6/6.8
160-90	218	354	31-TY9-27-160090	5.8/3.3	31-TY9-17-160090	9.5/5.4	31-TY9-11-160090	14.6/8.2
160-110	224	377	31-TY9-27-160110	5.8/4.0	31-TY9-17-160110	9.5/6.6	31-TY9-11-160110	14.6/10.0
160-125	228	394	31-TY9-27-160125	5.8/4.6	31-TY9-17-160125	9.5/7.4	31-TY9-11-160125	14.6/11.4
160-140	233	412	31-TY9-27-160140	5.8/5.1	31-TY9-17-160140	9.5/8.3	31-TY9-11-160140	14.6/12.7
180-75	226	337	31-TY9-27-180075	6.6/2.7	31-TY9-17-180075	10.7/4.5	31-TY9-11-180075	16.4/6.8
180-90	230	354	31-TY9-27-180090	6.6/3.3	31-TY9-17-180090	10.7/5.4	31-TY9-11-180090	16.4/8.2
180-110	236	377	31-TY9-27-180110	6.6/4.0	31-TY9-17-180110	10.7/6.6	31-TY9-11-180110	16.4/10.0
180-125	240	394	31-TY9-27-180125	6.6/4.6	31-TY9-17-180125	10.7/7.4	31-TY9-11-180125	16.4/11.4
180-140	244	412	31-TY9-27-180140	6.6/5.1	31-TY9-17-180140	10.7/8.3	31-TY9-11-180140	16.4/12.7
180-160	250	435	31-TY9-27-180160	6.6/5.8	31-TY9-17-180160	10.7/9.5	31-TY9-11-180160	16.4/14.6
200-90	251	379	31-TY9-27-200090	7.3/3.3	31-TY9-17-200090	11.9/5.4	31-TY9-11-200090	18.2/8.2
200-110	257	402	31-TY9-27-200110	7.3/4.0	31-TY9-17-200110	11.9/6.6	31-TY9-11-200110	18.2/10.0
200-125	262	419	31-TY9-27-200125	7.3/4.6	31-TY9-17-200125	11.9/7.4	31-TY9-11-200125	18.2/11.4



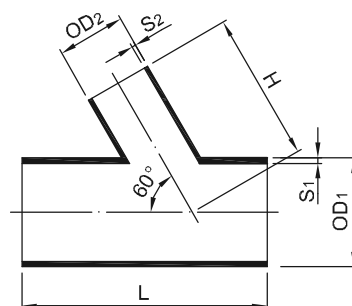
HD-PE

PIPE FITTING VALVE

HD-PE REDUCED 60° Y-TEE

(Fabricated)
with reduced branch
for butt welding
molded from PE100

手工對接異徑60° Y型三通
DFP TY9



OD ₁ /OD ₂ (mm)	H (mm)	L (mm)	SDR27.6 ISO S13.3 PN6		SDR17 ISO S8 PN10		SDR11 ISO S5 PN16	
			Code	S ₁ /S ₂ (mm)	Code	S ₁ /S ₂ (mm)	Code	S ₁ /S ₂ (mm)
200-140	266	437	31-TY9-27-200140	7.3/5.1	31-TY9-17-200140	11.9/8.3	31-TY9-11-200140	18.2/12.7
200-160	272	460	31-TY9-27-200160	7.3/5.8	31-TY9-17-200160	11.9/9.5	31-TY9-11-200160	18.2/14.6
200-180	277	483	31-TY9-27-200180	7.3/6.6	31-TY9-17-200180	11.9/10.7	31-TY9-11-200180	18.2/16.4
225-110	282	427	31-TY9-27-225110	8.2/4.0	31-TY9-17-225110	13.4/6.6	31-TY9-11-225110	20.5/10.0
225-125	286	444	31-TY9-27-225125	8.2/4.6	31-TY9-17-225125	13.4/7.4	31-TY9-11-225125	20.5/11.4
225-140	290	462	31-TY9-27-225140	8.2/5.1	31-TY9-17-225140	13.4/8.3	31-TY9-11-225140	20.5/12.7
225-160	296	485	31-TY9-27-225160	8.2/5.8	31-TY9-17-225160	13.4/9.5	31-TY9-11-225160	20.5/14.6
225-180	302	508	31-TY9-27-225180	8.2/6.6	31-TY9-17-225180	13.4/10.7	31-TY9-11-225180	20.5/16.4
225-200	308	531	31-TY9-27-225200	8.2/7.3	31-TY9-17-225200	13.4/11.9	31-TY9-11-225200	20.5/18.2
250-125	315	482	31-TY9-27-250125	9.1/4.6	31-TY9-17-250125	14.8/7.4	31-TY9-11-250125	22.7/11.4
250-140	320	499	31-TY9-27-250140	9.1/5.1	31-TY9-17-250140	14.8/8.3	31-TY9-11-250140	22.7/12.7
250-160	326	522	31-TY9-27-250160	9.1/5.8	31-TY9-17-250160	14.8/9.5	31-TY9-11-250160	22.7/14.6
250-180	331	545	31-TY9-27-250180	9.1/6.6	31-TY9-17-250180	14.8/10.7	31-TY9-11-250180	22.7/16.4
250-200	337	568	31-TY9-27-250200	9.1/7.3	31-TY9-17-250200	14.8/11.9	31-TY9-11-250200	22.7/18.2
250-225	344	597	31-TY9-27-250225	9.1/8.2	31-TY9-17-250225	14.8/13.4	31-TY9-11-250225	22.7/20.5
280-140	352	537	31-TY9-27-280140	10.2/5.1	31-TY9-17-280140	16.6/8.3	31-TY9-11-280140	25.4/12.7
280-160	358	560	31-TY9-27-280160	10.2/5.8	31-TY9-17-280160	16.6/9.5	31-TY9-11-280160	25.4/14.6
280-180	364	583	31-TY9-27-280180	10.2/6.6	31-TY9-17-280180	16.6/10.7	31-TY9-11-280180	25.4/16.4
280-200	370	606	31-TY9-27-280200	10.2/7.3	31-TY9-17-280200	16.6/11.9	31-TY9-11-280200	25.4/18.2
280-225	377	635	31-TY9-27-280225	10.2/8.2	31-TY9-17-280225	16.6/13.4	31-TY9-11-280225	25.4/20.5
280-250	384	664	31-TY9-27-280250	10.2/9.1	31-TY9-17-280250	16.6/14.8	31-TY9-11-280250	25.4/22.7
315-160	398	610	31-TY9-27-315160	11.4/5.8	31-TY9-17-315160	18.7/9.5	31-TY9-11-315160	28.6/14.6
315-180	404	633	31-TY9-27-315180	11.4/6.6	31-TY9-17-315180	18.7/10.7	31-TY9-11-315180	28.6/16.4
315-200	410	656	31-TY9-27-315200	11.4/7.3	31-TY9-17-315200	18.7/11.9	31-TY9-11-315200	28.6/18.2
315-225	417	685	31-TY9-27-315225	11.4/8.2	31-TY9-17-315225	18.7/13.4	31-TY9-11-315225	28.6/20.5
315-250	424	714	31-TY9-27-315250	11.4/9.1	31-TY9-17-315250	18.7/14.8	31-TY9-11-315250	28.6/22.7
315-280	433	748	31-TY9-27-315280	11.4/10.2	31-TY9-17-315280	18.7/16.6	31-TY9-11-315280	28.6/25.4
355-180	442	670	31-TY9-27-355180	12.9/6.6	31-TY9-17-355180	21.1/10.7	31-TY9-11-355180	32.2/16.4
355-200	448	693	31-TY9-27-355200	12.9/7.3	31-TY9-17-355200	21.1/11.9	31-TY9-11-355200	32.2/18.2
355-225	455	722	31-TY9-27-355225	12.9/8.2	31-TY9-17-355225	21.1/13.4	31-TY9-11-355225	32.2/20.5
355-250	462	751	31-TY9-27-355250	12.9/9.1	31-TY9-17-355250	21.1/14.8	31-TY9-11-355250	32.2/22.7
355-280	471	786	31-TY9-27-355280	12.9/10.2	31-TY9-17-355280	21.1/16.6	31-TY9-11-355280	32.2/25.4
355-315	481	826	31-TY9-27-355315	12.9/11.4	31-TY9-17-355315	21.1/18.7	31-TY9-11-355315	32.2/28.6



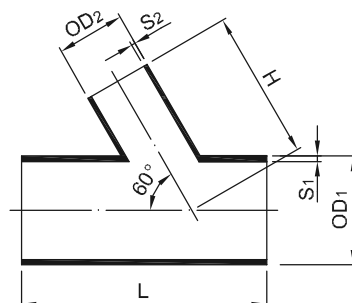
HD-PE

PIPE FITTING VALVE

HD-PE REDUCED 60° Y-TEE

(Fabricated)
with reduced branch
for butt welding
molded from PE100

手工對接異徑60° Y型三通
DFP TY9



OD ₁ /OD ₂ (mm)	H (mm)	L (mm)	SDR27.6 ISO S13.3 PN6		SDR17 ISO S8 PN10		SDR11 ISO S5 PN16	
			Code	S ₁ /S ₂ (mm)	Code	S ₁ /S ₂ (mm)	Code	S ₁ /S ₂ (mm)
400-200	499	756	31-TY9-27-400200	14.5/7.3	31-TY9-17-400200	23.7/11.9	31-TY9-11-400200	36.3/18.2
400-225	506	785	31-TY9-27-400225	14.5/8.2	31-TY9-17-400225	23.7/13.4	31-TY9-11-400225	36.3/20.5
400-250	513	814	31-TY9-27-400250	14.5/9.1	31-TY9-17-400250	23.7/14.8	31-TY9-11-400250	36.3/22.7
400-280	522	848	31-TY9-27-400280	14.5/10.2	31-TY9-17-400280	23.7/16.6	31-TY9-11-400280	36.3/25.4
400-315	532	889	31-TY9-27-400315	14.5/11.4	31-TY9-17-400315	23.7/18.7	31-TY9-11-400315	36.3/28.6
400-355	543	935	31-TY9-27-400355	14.5/12.9	31-TY9-17-400355	23.7/21.1	31-TY9-11-400355	36.3/32.2
450-225	560	847	31-TY9-27-450225	16.3/8.2	31-TY9-17-450225	26.7/13.4	31-TY9-11-450225	40.9/20.5
450-250	567	876	31-TY9-27-450250	16.3/9.1	31-TY9-17-450250	26.7/14.8	31-TY9-11-450250	40.9/22.7
450-280	576	911	31-TY9-27-450280	16.3/10.2	31-TY9-17-450280	26.7/16.6	31-TY9-11-450280	40.9/25.4
450-315	586	951	31-TY9-27-450315	16.3/11.4	31-TY9-17-450315	26.7/18.7	31-TY9-11-450315	40.9/28.6
450-355	597	997	31-TY9-27-450355	16.3/12.9	31-TY9-17-450355	26.7/21.1	31-TY9-11-450355	40.9/32.2
450-400	610	1049	31-TY9-27-450400	16.3/14.5	31-TY9-17-450400	26.7/23.7	31-TY9-11-450400	40.9/36.3
500-250	621	939	31-TY9-27-500250	18.1/9.1	31-TY9-17-500250	29.7/14.8	31-TY9-11-500250	45.4/22.7
500-280	630	973	31-TY9-27-500280	18.1/10.2	31-TY9-17-500280	29.7/16.6	31-TY9-11-500280	45.4/25.4
500-315	640	1014	31-TY9-27-500315	18.1/11.4	31-TY9-17-500315	29.7/18.7	31-TY9-11-500315	45.4/28.6
500-355	651	1063	31-TY9-27-500355	18.1/12.9	31-TY9-17-500355	29.7/21.1	31-TY9-11-500355	45.4/32.2
500-400	664	1118	31-TY9-27-500400	18.1/14.5	31-TY9-17-500400	29.7/23.7	31-TY9-11-500400	45.4/36.3
500-450	679	1170	31-TY9-27-500450	18.1/16.3	31-TY9-17-500450	29.7/26.7	31-TY9-11-500450	45.4/40.9
560-280	694	1048	31-TY9-27-560280	20.3/10.2	31-TY9-17-560280	33.2/16.6	31-TY9-11-560280	50.8/25.4
560-315	704	1089	31-TY9-27-560315	20.3/11.4	31-TY9-17-560315	33.2/18.7	31-TY9-11-560315	50.8/28.6
560-355	716	1135	31-TY9-27-560355	20.3/12.9	31-TY9-17-560355	33.2/21.1	31-TY9-11-560355	50.8/32.2
560-400	729	1187	31-TY9-27-560400	20.3/14.5	31-TY9-17-560400	33.2/23.7	31-TY9-11-560400	50.8/36.3
560-450	743	1245	31-TY9-27-560450	20.3/16.3	31-TY9-17-560450	33.2/26.7	31-TY9-11-560450	50.8/40.9
560-500	758	1302	31-TY9-27-560500	20.3/18.1	31-TY9-17-560500	33.2/29.7	31-TY9-11-560500	50.8/45.4
630-315	780	1176	31-TY9-27-630315	22.8/11.4	31-TY9-17-630315	37.4/18.7	31-TY9-11-630315	57.2/28.6
630-355	791	1222	31-TY9-27-630355	22.8/12.9	31-TY9-17-630355	37.4/21.1	31-TY9-11-630355	57.2/32.2
630-400	804	1269	31-TY9-27-630400	22.8/14.5	31-TY9-17-630400	37.4/23.7	31-TY9-11-630400	57.2/36.3
630-450	819	1332	31-TY9-27-630450	22.8/16.3	31-TY9-17-630450	37.4/26.7	31-TY9-11-630450	57.2/40.9
630-500	833	1390	31-TY9-27-630500	22.8/18.1	31-TY9-17-630500	37.4/29.7	31-TY9-11-630500	57.2/45.4
630-560	850	1459	31-TY9-27-630560	22.8/20.3	31-TY9-17-630560	37.4/33.2	31-TY9-11-630560	57.2/50.8



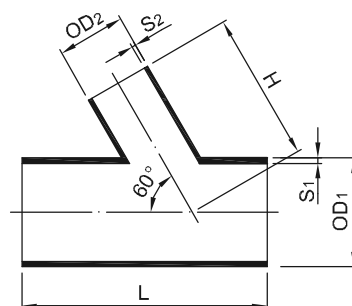
HD-PE

PIPE FITTING VALVE

HD-PE REDUCED 60° Y-TEE

(Fabricated)
with reduced branch
for butt welding
molded from PE100

手工對接異徑60° Y型三通
DFP TY9



OD ₁ /OD ₂ (mm)	H (mm)	L (mm)	SDR27.6 ISO S13.3 PN6		SDR17 ISO S8 PN10		SDR11 ISO S5 PN16	
			Code	S ₁ /S ₂ (mm)	Code	S ₁ /S ₂ (mm)	Code	S ₁ /S ₂ (mm)
710-355	877	1322	31-TY9-27-710355	25.7/12.9	31-TY9-17-710355	42.1/21.1	31-TY9-11-710355	64.5/32.2
710-400	890	1374	31-TY9-27-710400	25.7/14.5	31-TY9-17-710400	42.1/23.7	31-TY9-11-710400	64.5/36.3
710-450	904	1432	31-TY9-27-710450	25.7/16.3	31-TY9-17-710450	42.1/26.7	31-TY9-11-710450	64.5/40.9
710-500	919	1490	31-TY9-27-710500	25.7/18.1	31-TY9-17-710500	42.1/29.7	31-TY9-11-710500	64.5/45.4
710-560	937	1554	31-TY9-27-710560	25.7/20.3	31-TY9-17-710560	42.1/33.2	31-TY9-11-710560	64.5/50.8
710-630	957	1640	31-TY9-27-710630	25.7/22.8	31-TY9-17-710305	42.1/37.4	31-TY9-11-710305	64.5/57.2
800-400	987	1487	31-TY9-27-800400	29.0/14.5	31-TY9-17-800400	47.4/23.7	31-TY9-11-800400	72.8/36.3
800-450	1002	1545	31-TY9-27-800450	29.0/16.3	31-TY9-17-800450	47.4/26.7	31-TY9-11-800450	72.8/40.9
800-500	1016	1602	31-TY9-27-800500	29.0/18.1	31-TY9-17-800500	47.4/29.7	31-TY9-11-800500	72.8/45.4
800-560	1034	1672	31-TY9-27-800560	29.0/20.3	31-TY9-17-800560	47.4/33.2	31-TY9-11-800560	72.8/50.8
800-630	1054	1752	31-TY9-27-800630	29.0/22.8	31-TY9-17-800630	47.4/37.4	31-TY9-11-800630	72.8/57.2
800-710	1077	1840	31-TY9-27-800710	29.0/25.7	31-TY9-17-800710	47.4/42.1	31-TY9-11-800710	72.8/64.5
900-450	1110	1670	31-TY9-27-900450	32.6/16.3	31-TY9-17-900450	53.3/26.7	31-TY9-11-900450	81.8/40.9
900-500	1124	1728	31-TY9-27-900500	32.6/18.1	31-TY9-17-900500	53.3/29.7	31-TY9-11-900500	81.8/45.4
900-560	1141	1797	31-TY9-27-900560	32.6/20.3	31-TY9-17-900560	53.3/33.2	31-TY9-11-900560	81.8/50.8
900-630	1161	1878	31-TY9-27-900630	32.6/22.8	31-TY9-17-900630	53.3/37.4	31-TY9-11-900630	81.8/57.2
900-710	1185	1971	31-TY9-27-900710	32.6/25.7	31-TY9-17-900710	53.3/42.1	31-TY9-11-900710	81.8/64.5
900-800	1210	2075	31-TY9-27-900800	32.6/29.0	31-TY9-17-900800	53.3/47.4	31-TY9-11-900800	81.8/72.8
1000-500	1242	1874	31-TY9-27-100500	36.2/18.1	31-TY9-17-100500	59.3/29.7	-	-
1000-560	1259	1949	31-TY9-27-100560	36.2/20.3	31-TY9-17-100560	59.3/33.2	-	-
1000-630	1279	2030	31-TY9-27-100630	36.2/22.8	31-TY9-17-100630	59.3/37.4	-	-
1000-710	1302	2122	31-TY9-27-100710	36.2/25.7	31-TY9-17-100710	59.3/42.1	-	-
1000-800	1328	2226	31-TY9-27-100800	36.2/29.0	31-TY9-17-100800	59.3/47.4	-	-
1000-900	1357	2342	31-TY9-27-100900	36.2/32.6	31-TY9-17-100900	59.3/53.3	-	-
1200-560	1475	2197	31-TY9-27-120560	43.5/20.3	31-TY9-17-120560	67.9/33.2	-	-
1200-630	1495	2277	31-TY9-27-120630	43.5/22.8	31-TY9-17-120630	67.9/37.4	-	-
1200-710	1518	2365	31-TY9-27-120710	43.5/25.7	31-TY9-17-120710	67.9/42.1	-	-
1200-800	1544	2474	31-TY9-27-120800	43.5/29.0	31-TY9-17-120800	67.9/47.4	-	-
1200-900	1573	2590	31-TY9-27-120900	43.5/32.6	31-TY9-17-120900	67.9/53.3	-	-
1200-1000	1601	2705	31-TY9-27-120100	43.5/36.2	31-TY9-17-120100	67.9/59.3	-	-