



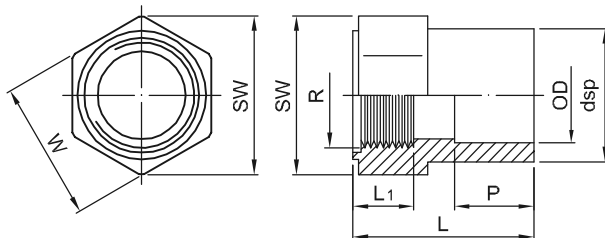
HD-PE

PIPE FITTING VALVE

HD-PE ADAPTOR

with female thread
for socket welding
molded from PE100

套接內牙閥接頭
DFP FD2

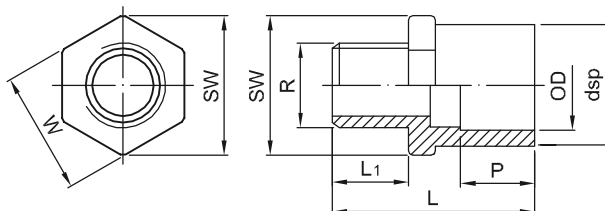


OD (mm)	L (mm)	L ₁ (mm)	dsp (mm)	P (mm)	R (mm)	WxSW (mm)	SDR11 ISO S5 PN16
							Code
20	46.0	16.0	28.5	29.0	1/2" BSP	32.0x35.5	31-FD2-17-0020
25	51.0	17.0	34.4	33.5	3/4" BSP	40.5x45.0	31-FD2-17-0025
32	58.0	20.0	42.5	37.5	1" BSP	45.5x50.5	31-FD2-17-0032
40	63.0	24.0	51.5	38.5	1-1/4" BSP	54.5x60.0	31-FD2-17-0040
50	69.5	25.0	63.5	44.0	1-1/2" BSP	69.5x77.0	31-FD2-17-0050
63	75.0	28.5	79.5	46.0	2" BSP	84.0x94.0	31-FD2-17-0063

HD-PE ADAPTOR

with male thread
for socket welding
molded from PE100

套接外牙閥接頭
DFP MD2



OD (mm)	L (mm)	L ₁ (mm)	dsp (mm)	P (mm)	R (mm)	WxSW (mm)	SDR11 ISO S5 PN16
							Code
20	46.5	18.5	28.0	15.0	1/2" BSP	30.5x33.5	31-MD2-17-0020
25	51.5	21.0	34.0	17.5	3/4" BSP	37.0x41.0	31-MD2-17-0025
32	62.5	24.5	43.0	20.0	1" BSP	44.5x49.5	31-MD2-17-0032
40	67.0	27.5	51.5	21.6	1-1/4" BSP	53.5x59.0	31-MD2-17-0040
50	74.5	29.0	63.5	24.0	1-1/2" BSP	65.0x72.0	31-MD2-17-0050
63	80.0	32.0	79.0	28.0	2" BSP	81.1x91.0	31-MD2-17-0063