

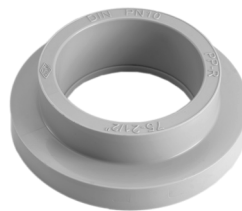
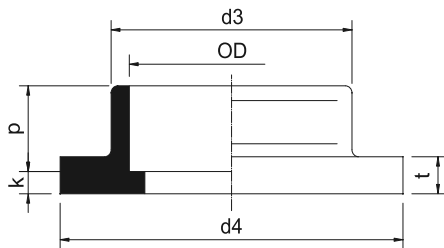


PP-H/PP-H(FRP COATED) PIPE FITTING VALVE

PP-H FLANGE ADAPTORS

for socket welding
molded from PP-H

套接中間法蘭
DFP FT2

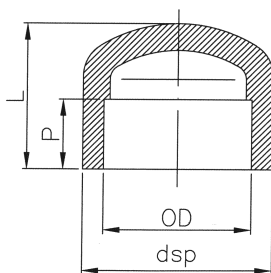


OD (mm)	d3 (mm)	d4 (mm)	t (mm)	k (mm)	P (mm)	SDR 7 ISO S5 PN10	
						Code	Weight (kg/Pc.)
20	27.6	44.8	9.6	4.6	15.8	21-FT2-11-0020	0.012
25	33.0	57.8	10.0	4.6	18.4	21-FT2-11-0025	0.022
32	41.8	67.5	10.0	5.0	20.4	21-FT2-11-0032	0.032
40	50.7	77.0	10.5	4.4	22.8	21-FT2-11-0040	0.048
50	61.4	88.0	14.9	7.0	24.3	21-FT2-11-0050	0.072
63	76.4	101.0	14.0	5.7	28.0	21-FT2-11-0063	0.090
75	90.6	120.6	15.8	5.6	32.6	21-FT2-11-0075	0.148
90	109.0	137.0	18.0	4.5	35.6	21-FT2-11-0090	0.210
110	131.5	156.8	18.0	6.5	42.0	21-FT2-11-0110	0.290

PP-H END CAP

for socket welding
molded from PP-H

套接管帽
DFP CP2



OD (mm)	dsp (mm)	L (mm)	P (mm)	SDR 7 ISO S5 PN10	
				Code	Weight (kg/Pc.)
16	24.0	24.5	14.4	21-CP2-11-0016	0.006
20	29.0	26.5	15.4	21-CP2-11-0020	0.008
25	35.0	30.0	17.0	21-CP2-11-0025	0.014
32	43.0	35.0	19.4	21-CP2-11-0032	0.024
40	52.0	39.0	21.5	21-CP2-11-0040	0.034
50	64.0	49.0	24.0	21-CP2-11-0050	0.060
63	81.0	59.5	28.3	21-CP2-11-0063	0.120
75	92.0	65.5	33.0	21-CP2-11-0075	0.146
90	113.0	76.4	37.3	21-CP2-11-0090	0.270
110	133.0	88.7	43.0	21-CP2-11-0110	0.404