



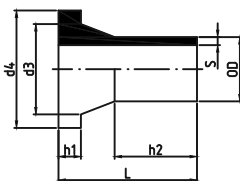
PP-H/PP-H(FRP COATED) PIPE FITTING VALVE

PP-H STUB FLANGE

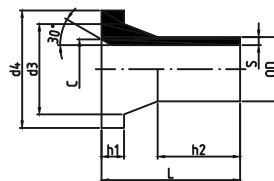
acc. DIN 16962/16963
molded from PP-H
for butt welding

對接中間法蘭

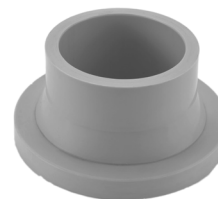
DFP FT1



OD20 ~ OD50



OD63 ~ OD1200



OD (mm)	h ₂ (mm)	L (mm)	d ₃ (mm)	d ₄ (mm)	SDR17 ISO S8.3 PN6			SDR11 ISO S5 PN10		
					Code	S (mm)	h ₁ (mm)	Code	S (mm)	h ₁ (mm)
20	28.0	50.8	28.0	44.9	-	-	-	21-FT1-0020-11	2.5	7.2
25	30.0	51.0	32.5	57.9	-	-	-	21-FT1-0025-11	2.7	9.2
32	26.0	50.9	40.2	67.9	-	-	-	21-FT1-0032-11	3.0	10
40	22.5	50.2	50.0	77.9	-	-	-	21-FT1-0040-11	3.7	11
50	22.5	50.8	60.6	87.8	21-FT1-0050-17.6	2.9	12.2	21-FT1-0050-11	4.6	12.2
63	19.0	50.1	73.5	102.1	21-FT1-0063-17.6	3.6	14	21-FT1-0063-11	5.8	14
75	19.0	49.8	85.0	121.8	21-FT1-0075-17.6	4.3	16.1	21-FT1-0075-11	6.9	16.1
90	41.0	80.0	104	137.7	21-FT1-0090-17.6	5.1	17	21-FT1-0090-11	8.2	17
110	39.0	80.0	125	158.0	21-FT1-0110-17.6	6.3	18.2	21-FT1-0110-11	10.0	18.2
125	102.0	175.0	135	157.9	21-FT1-0125-17.6	7.1	25.5	21-FT1-0125-11	11.4	25.5
140	129.7	197.1	155	191.0	21-FT1-0140-17.6	8.0	27.4	21-FT1-0140-11	12.8	27.4
160	110.0	160.5	175	212.0	21-FT1-0160-17.6	9.1	26.2	21-FT1-0160-11	14.6	26.2
180	127.0	180	186	217	21-FT1-0180-17.6	10.2	30	21-FT1-0180-11	16.4	30
200	144.0	213	229	268	21-FT1-0200-17.6	11.4	35.5	21-FT1-0200-11	18.2	35.5
225	144.0	213	237	268	21-FT1-0225-17.6	12.8	32	21-FT1-0225-11	20.5	32
250	205.0	273	284	320	21-FT1-0250-17.6	14.2	35	21-FT1-0250-11	22.8	35
280	303.5	375	292	320	21-FT1-0280-17.6	15.9	35	21-FT1-0280-11	25.5	35
315	303.5	379	334	371	21-FT1-0315-17.6	17.9	35	21-FT1-0315-11	28.7	35
355	-	175	373	430	21-FT1-0355-17.6	20.1	35	21-FT1-0355-11	32.3	35
400	-	175	427	482	21-FT1-0400-17.6	22.7	35	21-FT1-0400-11	36.4	35
450	-	180	514	585	21-FT1-0450-17.6	25.5	46	21-FT1-0450-11	41.0	46
500	-	180	530	585	21-FT1-0500-17.6	28.3	46	21-FT1-0500-11	45.5	46
560	-	180	615	685	21-FT1-0560-17.6	31.7	50	21-FT1-0560-11	50.9	50
630	-	200	642	685	21-FT1-0630-17.6	35.7	50	21-FT1-0630-11	57.2	50
710	-	200	737	800	21-FT1-0710-17.6	40.2	60	21-FT1-0710-11	64.5	60
800	-	200	-	905	21-FT1-0800-17.6	45.5	60	21-FT1-0800-11	72.7	60
900	-	230	-	1005	21-FT1-0900-17.6	51.2	70	21-FT1-0900-11	81.8	70
1000	-	240	-	1110	21-FT1-1000-17.6	56.8	70	21-FT1-1000-11	90.9	70
1200	-	240	-	1330	21-FT1-1200-17.6	68.1	70	21-FT1-1200-11	109.0	70