



BALL CHECK VALVE (VERTICAL TYPE)



JB Series

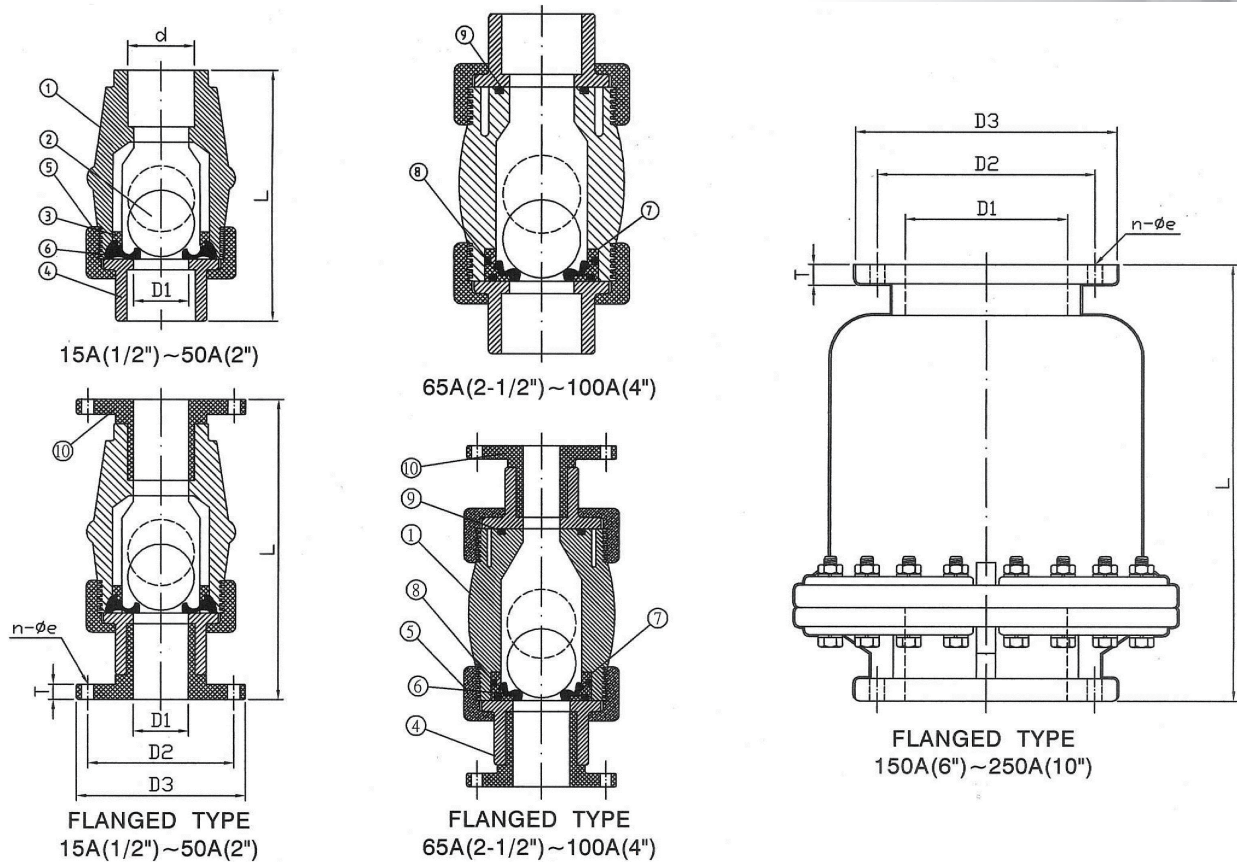
球型逆止凡而（直式）

**SOCKET JB100 / THREAD JB200 / FLANGED JB300
SIZE: 1/2"-10"**

MATERIALS OF CONSTRUCTION

No.	Parts	Pcs.	Materials
1	Body	1	UPVC, PP, CPVC, PVDF
2	Ball	1	UPVC, CPVC, PVDF, PPG
3	Washer	1	UPVC, PP, CPVC, PVDF
4	End Connector	1...DN15-50 2...DN65-100	UPVC, PP, CPVC, PVDF
5	Union Nut	1...DN15-50 2...DN65-100	UPVC, PP, CPVC, PVDF
6	Seat	1	EPDM, VITON
7	Seat Carrier	1	UPVC, PP, CPVC, PVDF
8	Seat Carrier O'ring	1	EPDM, VITON
9	Solid End O'ring	1	EPDM, VITON
10	Flanged End	2...DN15-100 1...DN150-250	UPVC, PP, CPVC, PVDF
11	Reinforcement Plate	4...DN150 8...DN250	SUS304(150A-250A)
12	Bolts on Reinforcement Plate	10...DN150 20...DN250	SUS304

Min. Open Close Pressure kgf/cm ² (bar)		
Size	Open	Close
1/2"	0.05	0.2
3/4"	0.05	0.3
1"	0.05	0.3
1-1/4"	0.1	0.3
1-1/2"	0.1	0.3
2"	0.1	0.3
2-1/2"	0.1	0.3
3"	0.1	0.2
4"	0.1	0.2
6"		
10"		



SPECIFICATIONS:

1. Test Press: ① {15mm(1/2'')~100mm(4'') : 15kgf/cm ² (bar){225lb/in ² }}	2. Working Press: ① {15mm(1/2'')~100mm(4'') : 10kgf/cm ² (bar){150lb/in ² }}
② {150mm(6'') : 10kgf/cm ² (bar) (150lb/in ²) }	② {150mm(6'') : 7kgf/cm ² (bar) (100lb/in ²) }
③ {250mm(10'') : 5kgf/cm ² (bar) (75lb/in ²) }	③ {250mm(10'') : 3kgf/cm ² (bar) (45lb/in ²) }

DIMENSIONS TABLE

Nom. Size DN-inch	JIS										ANSI										DIN												
	Unit:mm										Unit:inch										Unit:mm												
	D1	d		D2	D3	n	øe	L			T	D1	d		D2	D3	n	øe	L			T	D1	d		D2	D3	n	øe	L			T
		Screw	Socket					Screw	Socket	Flange			Screw	Socket					Flange	Screw	Socket			Flange	Screw					Socket	Flange		
15(1/2")	15	PT	22	70	95	4	15	96	96	135	15	0.59	NPT	0.84	2.375	3.500	4	0.63	3.78	3.78	5.32	0.59	15	R1/2	20	65	95	4	14	96	96	135	15
20(3/4")	20	PT	26	75	100	4	15	118	118	157	16	0.79	NPT	1.05	2.750	3.785	4	0.63	4.65	4.65	6.18	0.59	20	R3/4	25	75	105	4	14	118	118	157	15
25(1")	26	PT	32	90	125	4	19	124	124	167	17	0.98	NPT	1.32	3.125	4.250	4	0.63	4.88	4.88	6.58	0.66	26	R1	32	85	115	4	14	124	124	167	17
32(1-1/4")	36	PT	38	100	135	4	19	151	151	197	16	1.42	NPT	1.67	3.500	4.625	4	0.63	5.94	5.94	7.77	0.67	36	R1-1/4	40	100	140	4	18	151	151	197	17
40(1-1/2")	36	PT	48	105	145	4	19	151	151	199	18	1.57	NPT	1.91	3.875	5.000	4	0.63	5.94	5.94	7.84	0.7	36	R1-1/2	50	110	150	4	18	151	151	199	17
50(2")	50	PT	60	120	155	4	19	180	180	231	21	1.96	NPT	2.38	4.750	6.000	4	0.75	7.09	7.09	9.09	0.78	50	R2	63	125	165	4	18	180	180	231	20
65(2-1/2")	65	PT	76	140	175	4	19	222	222	275	20	2.36	NPT	2.88	5.500	7.000	4	0.75	8.74	8.74	10.83	0.8	65	R2-1/2	75	145	185	4	18	222	222	275	20
80(3")	80	PT	89	150	185	8	19	275	275	330	23	3.15	NPT	3.51	6.000	7.500	4	0.75	10.83	10.83	12.99	0.91	80	R3	90	160	200	8	18	275	275	330	23
100(4")	100	PT	114	175	210	8	19	361	361	415	20	3.74	NPT	4.51	7.500	9.000	8	0.75	14.21	14.21	16.34	0.92	100	R4	110	180	220	8	18	361	361	415	20
150(6")	150	-	-	240	280	8	23	-	-	485	23	-	-	-	9.500	11.000	8	0.88	-	-	19.09	0.87	150	-	-	240	285	8	23	-	-	485	23
250(10")	250	-	-	355	400	12	25	-	-	668	25	-	-	-	14.250	16.000	12	1.00	-	-	26.3	0.94	250	-	-	350	395	12	23	-	-	668	25

※ 本尺表以 PVC 材質為準，本表試壓值以 PVC、PVDF 材質為準，PP 材質試壓值為本表試壓值之 70%。

※ 法蘭長度公差依據 EN558-1:1995 標準

※ The dimension table is calculated based on PVC material.
The valve of test pressure is calculated based on PVC PVDF materials.
The valve of test pressure for PP material is 70% based on the table.
The flanged length tolerance is according to EN558-1:1995.