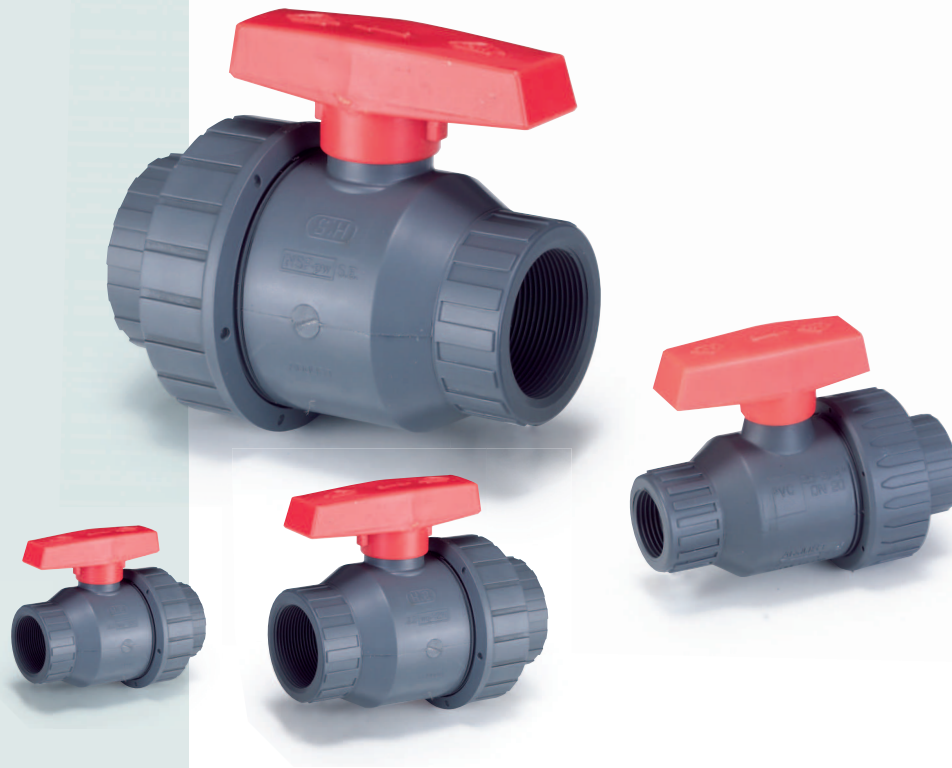


SINGLE UNION BALL VALVE



CS Series

單由任球閥

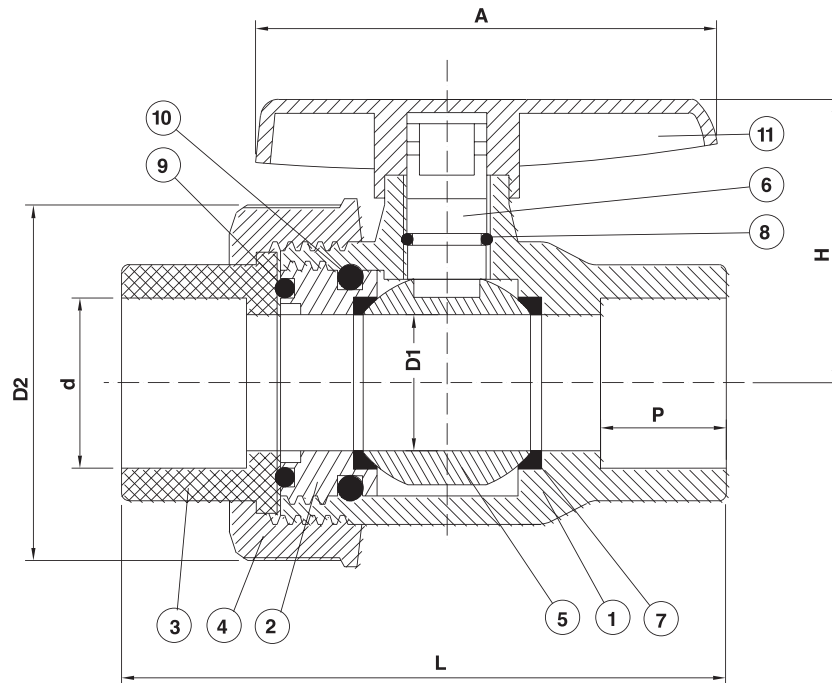
CS100 SOCKET / CS200 THREAD

MATERIALS OF CONSTRUCTION

Item	Parts	Pcs	Materials	Item	Parts	Pcs	Materials
1	Body	1	UPVC, PP	7	Seat	2	PTFE
2	Seat Carrier	1	UPVC, PP	8	Stem O-ring	1	EPDM,VITON
3	End Connector	1	UPVC, PP	9	Seat Carrier O-ring	1	EPDM,VITON
4	Union Nut	1	UPVC, PP	10	Body- O-ring	1	EPDM,VITON
5	Ball	1	UPVC, PP	11	Handle	1	ABS
6	Stem	1	UPVC, PP				

DIMENSIONS TABLE

JIS											Unit: mm	
Nom DN	Size inch	D1	d		D2	L		P	H	A	Testpress (kgf/cm ²)	Working press (kgf/cm ²)
			Socket	Thread		Socket	Thread					
15	1/2"	15	22	PT1/2"	53	97	97	22.2	51	66	15	10
20	3/4"	18	26	PT3/4"	64	111	111	25.4	65	75	15	10
25	1"	25	32	PT 1"	73	122	122	28.6	71	85	15	10
32	1-1/4"	39	38	PT1-1/4"	98	158	158	31.8	86	109	15	10
40	1-1/2"	39	48	PT1-1/2"	98	158	158	34.9	86	109	15	10
50	2"	48	60	PT 2"	117	173	173	38.1	104	134	15	10



DN15~DN50

DIMENSIONS TABLE

ANSI											Unit: inch	
Nom DN	Size inch	D1	d		D2	L		P	H	A	Testpress (lb/in ²)	Working press (lb/in ²)
			Socket	Thread		Socket	Thread					
15	1/2"	0.59	0.840	NPT 1/2"	2.09	3.82	3.82	0.875	2.01	2.60	235	150
20	3/4"	0.71	1.050	NPT 3/4"	2.52	4.37	4.37	1.000	2.56	2.95	235	150
25	1"	0.98	1.315	NPT 1"	2.87	4.80	4.80	1.125	2.80	3.35	235	150
32	1-1/4"	1.54	1.660	NPT1-1/4"	3.86	6.22	6.22	1.250	3.39	4.29	235	150
40	1-1/2"	1.54	1.900	NPT1-1/2"	3.86	6.22	6.22	1.375	3.39	4.29	235	150
50	2"	1.89	2.375	NPT 2"	4.61	6.81	6.81	1.500	4.09	5.29	235	150

DIN											Unit: mm	
Nom DN	Size inch	D1	d		D2	L		P	H	A	Testpress (bar)	Working press (bar)
			Socket	Thread		Socket	Thread					
15	1/2"	15	22	R1/2"	53	97	97	16	51	66	15	10
20	3/4"	18	25	R3/4"	64	111	111	18.5	65	75	15	10
25	1"	25	32	R 1"	73	122	122	22.0	71	85	15	10
32	1-1/4"	39	40	R1-1/4"	98	158	158	26.0	86	109	15	10
40	1-1/2"	39	50	R1-1/2"	98	158	158	31.0	86	109	15	10
50	2"	48	63	R 2"	117	173	173	37.5	104	134	15	10

※ 本尺表以 PVC 材質為準，本表試壓值以 PVC 材質為基準，PP 材質試壓值為本表試壓值之 70%。

※ The dimension table is calculated based on PVC material.
 ※ The valve of test pressure is calculated based on PVC materials.
 ※ The valve of test pressure for PP material is 70% based on this table.