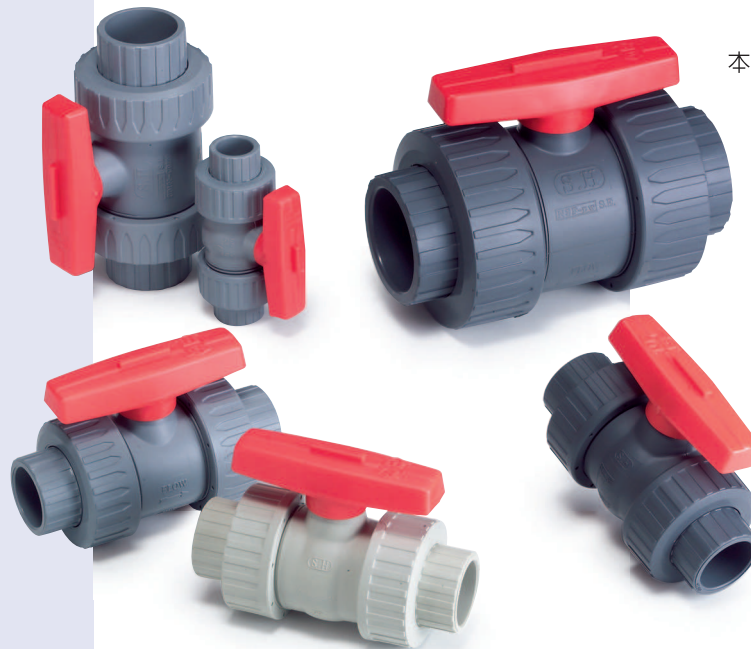




SAFETY BLOCK (TRUE UNION)BALL VALVE



本產品榮獲NSF 14/NSF 61認證合格
NSF certified listing

CB Series

安全球閥

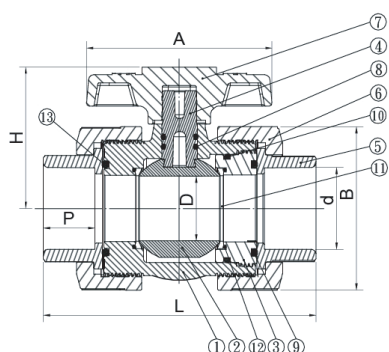
CB100 SOCKET/ CB200 THREAD/ CB300 FLANGED
Size: 1/2" - 4"

MATERIALS OF CONSTRUCTION

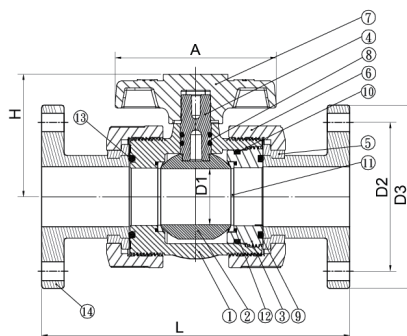
Item	Parts	Pcs	Materials	Item	Parts	Pcs	Materials
1	BODY	1	UPVC,PP,CPVC,PVDF	8	STEM O'RING	2	EPDM,VITON
2	BALL	1	UPVC,PP,CPVC,PVDF	9	END'S O'RING	1	EPDM,VITON
3	SEAT CARRIER	1	UPVC,PP,CPVC,PVDF	10	BODY O'RING	1	EPDM,VITON
4	STEM	1	UPVC,PP,CPVC,PVDF	11	SEAT	1	PTFE
5	END CONNECTOR	2	UPVC,PP,CPVC,PVDF	12	SOLID CARRIER O'RING	2	EPDM,VITON
6	UNION NUT	2	UPVC,PP,CPVC,PVDF	13	SOLID END O'RING	1	EPDM,VITON
7	HANDLE	1	ABS	14	FLANGE	2	UPVC,PP,CPVC,PVDF

DIMENSIONS TABLE

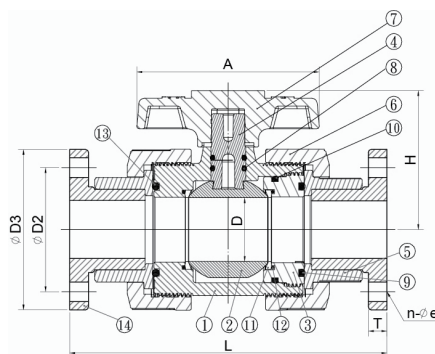
JIS																Unit:mm	
Nominal Pipe Size	D1	D2	D3	d		e	n	P	L			A	T	H	B	TestPress (kgf/cm ²)	Working press (kgf/cm ²)
				Socket	Thread				Socket	Thread	Flange						
15(1/2")	15	70	95	22	PT1/2	15	4	22.2	115	115	152	77	15	55	54	22.5	15
20(3/4")	19	75	100	26	PT3/4	15	4	25.4	126	126	164	85	16	60	65	22.5	15
25(1")	25	90	125	32	PT1	19	4	28.6	145	145	189	98	17	71	73	22.5	15
32(1-1/4")	38	100	135	38	PT1-1/4	19	4	31.8	167	167	211	109	17	75	81	22.5	15
40(1-1/2")	38	105	140	48	PT1-1/2	19	4	34.9	182	182	230	118	17	95	98	22.5	15
50(2")	48	120	155	60	PT2	19	4	38.1	202	202	254	137	20	104	120	22.5	15
65(2-1/2")	65	140	175	76	PT2-1/2	19	4	44.5	227	227	279	190	20	140	150	15	10
80(3")	78	150	185	89	PT3	19	8	47.6	273	273	328	230	23	165	184	15	10
100(4")	102	175	210	114	PT4	19	8	57.0	323	323	387	274	23	172	226	15	10



SOCKET & SCREW TYPE



15A-50A FLANGE TYPE



65A-100A FLANGE TYPE

DIMENSIONS TABLE

ANSI																Unit:inch	
Nominal Pipe Size	D1	D2	D3	d		e	n	P	L			A	T	H	B	Test Press (lb/in ²)	Working press (lb/in ²)
				Socket	Thread				Socket	Thread	Flange						
15(1/2")	0.59	2.375	3.500	0.848	NPT1/2	0.625	4	0.875	4.528	4.528	5.984	3.03	0.591	2.17	2.17	353	235
20(3/4")	0.748	2.750	3.875	1.058	NPT3/4	0.625	4	1.000	4.961	4.961	6.457	3.35	0.630	2.36	2.56	353	235
25(1")	0.98	3.125	4.250	1.325	NPT1	0.625	4	1.125	5.709	5.709	7.441	3.86	0.669	2.80	2.87	353	235
32(1-1/4")	1.496	3.500	4.625	1.670	NPT1-1/4	0.625	4	1.250	6.574	6.574	8.307	4.29	0.669	2.95	3.19	353	235
40(1-1/2")	1.496	3.875	5.000	1.912	NPT1-1/2	0.625	4	1.375	7.165	7.165	9.055	4.65	0.709	3.74	3.86	353	235
50(2")	1.89	4.750	6.000	2.387	NPT2	0.750	4	1.500	7.953	7.953	10.000	5.39	0.787	4.09	4.72	353	235
65(2-1/2")	2.56	5.500	7.000	2.889	NPT2-1/2	0.750	4	1.750	8.937	8.937	10.984	7.48	0.787	5.51	5.90	235	150
80(3")	3.07	6.000	7.500	3.515	NPT3	0.750	4	1.875	10.748	10.748	12.914	9.06	0.90	6.50	7.24	235	150
100(4")	4.01	7.500	9.000	4.518	NPT4	0.750	8	2.250	12.716	12.716	15.236	10.79	0.90	6.77	8.897	235	150

DIN																Unit:mm	
Nominal Pipe Size	D1	D2	D3	d		e	n	P	L			A	T	H	B	Test Press (bar)	Working press (bar)
				Socket	Thread				Socket	Thread	Flange						
15(1/2")	15	65	95	20	R1/2	14	4	16.0	115	115	152	77	15	55	54	24	16
20(3/4")	19	75	105	25	R3/4	14	4	18.5	126	126	164	85	16	60	65	24	16
25(1")	25	85	115	32	R1	14	4	22.0	145	145	189	98	17	71	73	24	16
32(1-1/4")	38	100	140	40	R1-1/4	18	4	26.0	167	167	211	109	17	75	81	24	16
40(1-1/2")	38	110	150	50	R1-1/2	18	4	31.0	182	182	230	118	18	95	98	24	16
50(2")	48	125	165	63	RT2	18	4	37.5	202	202	254	137	20	104	120	24	16
65(2-1/2")	65	145	185	75	R2-1/2	18	4	43.5	227	227	279	190	20	140	150	15	10
80(3")	78	160	200	90	R3	18	8	51.0	273	273	328	230	23	165	184	15	10
100(4")	102	180	220	110	R4	18	8	61.0	323	323	387	274	23	172	226	15	10

※ 本尺寸表以 PVC 材質為準，本表試壓值以 PVC、PVDF 材質為準，PP 材質試壓值為本表試壓值之 70%。

※ 法蘭長度公差依據 EN558-1:1995 標準

The dimension table is calculated based on PVC material.
※ The valve of test pressure is calculated based on PVC PVDF materials.
The valve of test pressure for PP material is 70% based on the table.
The flanged length tolerance is according to EN558-1:1995.