

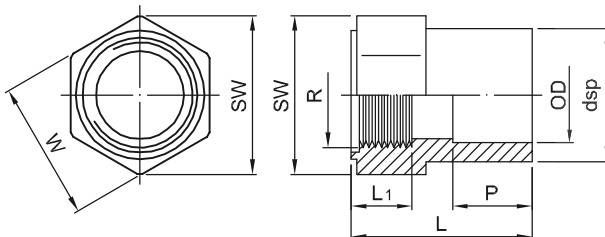


# PP-H/PP-H(FRP COATED) PIPE FITTING VALVE

## PP-H ADAPTOR

with female thread  
for socket welding  
molded from PP-H

套接內牙閥接頭  
DFP FD2

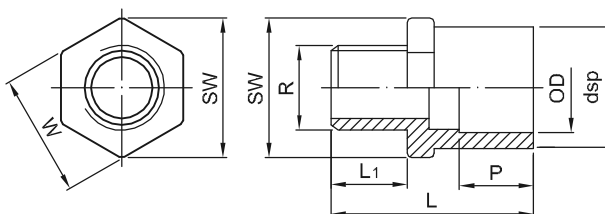


OD (mm)	dsp (mm)	L (mm)	P (mm)	L <sub>1</sub> (mm)	R (mm)	WxSW (mm)	SDR 7 ISO S5 PN10
							Code
20	28.5	46.0	29.0	16.0	1/2" BSP	32.0x35.5	21-FD2-11-0020
25	34.5	51.0	33.5	17.0	3/4" BSP	40.5x45.0	21-FD2-11-0025
32	42.5	58.0	37.5	20.0	1" BSP	45.5x50.5	21-FD2-11-0032
40	51.5	63.0	38.5	24.0	1-1/4"BSP	54.5x60.0	21-FD2-11-0040
50	63.5	69.5	44.0	25.0	1-1/2"BSP	69.5x77.0	21-FD2-11-0050
63	79.5	75.0	46.0	28.5	2" BSP	84.0x94.0	21-FD2-11-0063

## PP-H ADAPTOR

with male thread  
for socket welding  
molded from PP-H

套接外牙閥接頭  
DFP MD2



OD (mm)	dsp (mm)	L (mm)	L <sub>1</sub> (mm)	P (mm)	R (mm)	WxSW (mm)	SDR 7 ISO S5 PN10
							Code
20	28.0	46.5	18.5	15.0	1/2" BSP	30.5x33.5	21-MD2-11-0020
25	34.0	51.5	21.0	17.5	3/4" BSP	37.0x41.0	21-MD2-11-0025
32	43.0	62.5	24.5	20.0	1" BSP	44.5x49.5	21-MD2-11-0032
40	51.5	67.0	27.5	21.6	1-1/4"BSP	53.5x59.0	21-MD2-11-0040
50	63.5	74.5	29.0	24.0	1-1/2"BSP	65.0x72.0	21-MD2-11-0050
63	79.0	80.0	32.0	28.0	2" BSP	81.1x91.0	21-MD2-11-0063