



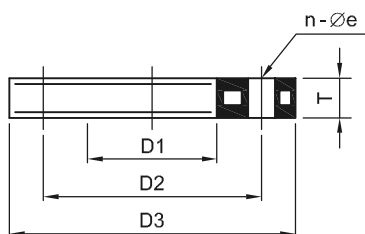
PP-H/PP-H(FRP COATED) PIPE FITTING VALVE

BACKING RING

With steel insert
for steel beadings
acc.to DIN PN10
mold from PP grey PP black

法蘭鐵片

DFP FHD



OD (mm)	D1 (mm)	D2 (mm)	D3 (mm)	e (mm)	n Number	T (mm)	SDR11 ISO S5 PN10
							Code
20	28	65	95	14	4	12	31-FHD-11-0020
25	34	75	105	14	4	12	31-FHD-11-0025
32	42	85	115	14	4	16	31-FHD-11-0032
40	51	100	140	18	4	16	31-FHD-11-0040
50	62	110	150	18	4	18	31-FHD-11-0050
63	78	125	165	18	4	18	31-FHD-11-0063
75	92	145	185	18	4	18	31-FHD-11-0075
90	108	160	200	18	8	20	31-FHD-11-0090
110	128	180	220	18	8	20	31-FHD-11-0110
140	158	210	250	18	8	22	31-FHD-11-0140
160	178	240	285	23	8	22	31-FHD-11-0160
180	188	240	285	23	8	22	31-FHD-11-0180
200	235	295	340	23	8	24	31-FHD-11-0200
225	238	295	340	23	8	24	31-FHD-11-0225
250	288	350	390	23	12	26	31-FHD-11-0250
280	294	350	395	23	12	26	31-FHD-11-0280
315	338	400	445	23	12	26	31-FHD-11-0315
▲ 355	376	460	505	30	16	28	31-FHD-11-0355
▲ 400	430	515	565	30	16	28	31-FHD-11-0400
▲ 450	517	620	670	30	20	30	31-FHD-11-0450
▲ 500	533	620	670	30	20	30	31-FHD-11-0500
▲ 560	618	725	780	30	20	30	31-FHD-11-0560
▲ 630	645	725	780	30	20	30	31-FHD-11-0630
▲ 710	740	840	895	30	24	30	31-FHD-11-0710
▲ 800	840	950	1015	33	24	36	31-FHD-11-0800
▲ 900	950	1050	1115	33	28	38	31-FHD-11-0900
▲ 1000	1050	1160	1230	36	28	40	31-FHD-11-1000
▲ 1100	1155	-	1430	-	-	40	31-FHD-11-1100
▲ 1200	1260	1380	1455	39	32	40	31-FHD-11-1200

▲ 鋼鐵製品(Steel ones)

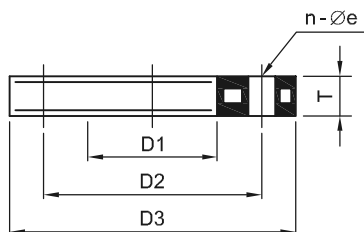


PP-H/PP-H(FRP COATED) PIPE FITTING VALVE

BACKING RING

With steel insert
acc.to ANSI standard
PP grey

法蘭鐵片150#
DFP FHA



OD (inch)	D1 (mm)	D2		D3 (mm)	e (mm)	n Number	T (mm)	SDR11 ISO S5 PN10
		(mm)	(inch)					Code
1/2"	28	60.50	2-3/8"	89	16	4	12	31-FHA-11-0020
3/4"	34	69.85	2-3/4"	98	16	4	12	31-FHA-11-0025
1"	42	79.25	3-1/8"	108	16	4	16	31-FHA-11-0032
1-1/4"	51	88.90	3-1/2"	117	16	4	16	31-FHA-11-0040
1-1/2"	62	98.55	3-7/8"	127	16	4	18	31-FHA-11-0050
2"	78	120.65	4-3/4"	152	19	4	18	31-FHA-11-0063
2-1/2"	92	139.70	5-1/2"	178	19	4	18	31-FHA-11-0075
3"	111	152.40	6"	191	19	4	20	31-FHA-11-0090
4"	133	190.50	7-1/2"	229	19	8	20	31-FHA-11-0110
5"	133	190.50	7-1/2"	254	22	8	20	31-FHA-11-0125
6"	178	241.00	9-1/2"	279	22	8	24	31-FHA-11-0160
8"	236	298.45	11-3/4"	343	22	8	28	31-FHA-11-0200
10"	288	361.95	14-1/4"	406	25	12	30	31-FHA-11-0250
12"	338	431.80	17"	483	25	12	32	31-FHA-11-0315
▲ 14"	376	476.25	18-3/4"	533	29	12	28	31-FHA-11-0355
▲ 16"	430	539.75	21-1/4"	597	29	16	28	31-FHA-11-0400
▲ 18"	517	577.85	22-3/4"	635	32	16	30	31-FHA-11-0450
▲ 20"	533	635.00	25"	699	32	20	30	31-FHA-11-0500
▲ 24"	645	749.30	29-1/2"	813	35	20	30	31-FHA-11-0630
▲ 28"	740	863.35	34"	928	35	24	30	31-FHA-11-0710
▲ 32"	840	977.90	38-1/2"	1060	41	24	36	31-FHA-11-0800
▲ 36"	950	1085.9	42-3/4"	1178	41	32	38	31-FHA-11-0900
▲ 40"	1050	1174.8	46-1/4"	1286	41	32	40	31-FHA-11-1000
▲ 44"	1055	1314.5	51-3/4"	1403	41	40	40	31-FHA-11-1100
▲ 48"	1260	1422.4	56"	1512	41	44	40	31-FHA-11-1200

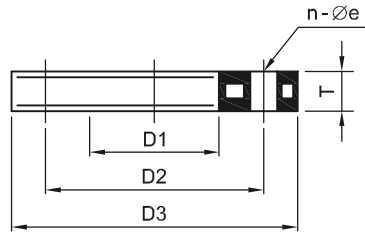
▲ 鋼鐵製品(Steel ones)



PP-H/PP-H(FRP COATED) PIPE FITTING VALVE

BACKING RING

With steel insert
acc.to JIS standard
PP grey
法蘭鐵片10K
DFP FHJ



DN (inch)	D1 (mm)	D2 (mm)	D3 (mm)	e (mm)	n Number	T (mm)	SDR11 ISO S5 PN10
							Code
1/2"	28	70	96	15	4	12	31-FHJ-11-0020
3/4"	34	75	100	15	4	14	31-FHJ-11-0025
1"	42	90	125	19	4	14	31-FHJ-11-0032
1-1/4"	51	100	135	19	4	14	31-FHJ-11-0040
1-1/2"	62	105	140	19	4	16	31-FHJ-11-0050
2"	78	120	155	19	4	16	31-FHJ-11-0063
2-1/2"	92	140	175	19	4	16	31-FHJ-11-0075
3"	110	150	185	19	8	18	31-FHJ-11-0090
4"	133	175	210	19	8	18	31-FHJ-11-0110
5"	160	210	250	23	8	20	31-FHJ-11-0140
6"	178	240	280	23	8	21	31-FHJ-11-0160
8"	238	290	330	23	12	21	31-FHJ-11-0225
10"	288	355	400	25	12	24	31-FHJ-11-0250
12"	338	400	445	25	16	26	31-FHJ-11-0315
▲ 14"	376	445	490	25	16	28	31-FHJ-11-0355
▲ 16"	430	510	560	27	16	28	31-FHJ-11-0400
▲ 18"	517	565	620	27	20	30	31-FHJ-11-0450
▲ 20"	533	620	675	27	20	30	31-FHJ-11-0500
▲ 24"	645	730	795	33	24	30	31-FHJ-11-0630
▲ 28"	740	840	905	33	24	30	31-FHJ-11-0710
▲ 32"	840	950	1020	33	28	36	31-FHJ-11-0800
▲ 36"	950	1050	1120	33	28	38	31-FHJ-11-0900
▲ 40"	1050	1160	1235	39	28	40	31-FHJ-11-1000
▲ 44"	1155	1275	1403	39	28	40	31-FHJ-11-1100
▲ 48"	1260	1380	1512	39	32	40	31-FHJ-11-1200

▲ 鋼鐵製品(Steel ones)