

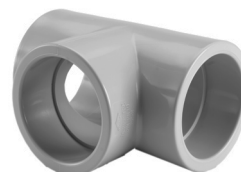
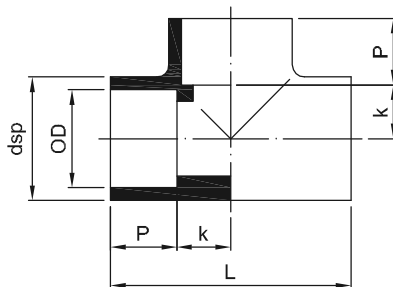


PP-H/PP-H(FRP COATED) PIPE FITTING VALVE

PP-H TEE

for socket welding
molded from PP-H

套接三通
DFP TT3

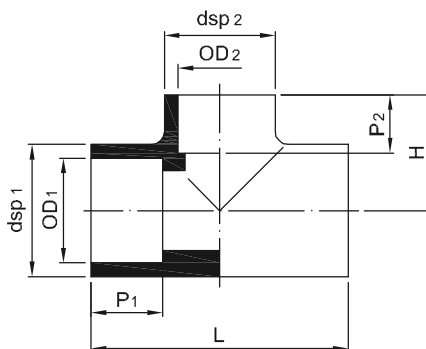


OD (mm)	dsp (mm)	k (mm)	P (mm)	L (mm)	SDR 7 ISO S5 PN10	
					Code	Weight (kg/Pc.)
16	24.0	12.5	14.5	54.0	21-TT3-11-0016	0.018
20	29.0	14.5	15.5	60.0	21-TT3-11-0020	0.026
25	35.0	16.9	17.2	68.2	21-TT3-11-0025	0.042
32	42.7	20.5	19.5	80.0	21-TT3-11-0032	0.064
40	51.5	25.8	21.2	94.0	21-TT3-11-0040	0.098
50	64.0	30.0	24.0	108.0	21-TT3-11-0050	0.164
63	80.5	34.25	28.0	124.5	21-TT3-11-0063	0.288
75	91.5	43.25	32.5	151.5	21-TT3-11-0075	0.406
90	113.5	55.1	37.5	185.2	21-TT3-11-0090	0.810
110	134.5	61.4	43.0	208.8	21-TT3-11-0110	1.108

PP-H REDUCED TEE

for socket welding
molded from PP-H

套接異徑三通
DFP TR2



OD (mm)	H (mm)	L (mm)	dsp ₁ (mm)	dsp ₂ (mm)	P ₁ (mm)	P ₂ (mm)	SDR 7 ISO S5 PN10	
							Code	Weight (kg/Pc.)
25/20	32.0	68.5	35	29	16	14.5	21-TR2-11-025020	0.04
32/20	40.0	80.5	42.8	29	18	14.5	21-TR2-11-032020	0.05
32/25	40.0	80.5	42.8	35	18	16	21-TR2-11-032025	0.06
40/20	45.0	90.5	52	29	20.5	14.5	21-TR2-11-040020	0.08
40/25	45.0	90.5	52	35	20.5	16	21-TR2-11-040025	0.08
40/32	45.0	91.5	52	42.8	20.5	18	21-TR2-11-040032	0.10
50/20	52.5	107.0	63.8	29	23.5	14.5	21-TR2-11-050020	0.16
50/25	52.5	107.0	63.8	35	23.5	16	21-TR2-11-050025	0.16
50/32	52.5	107.0	63.8	42.8	23.5	18	21-TR2-11-050032	0.17
50/40	52.5	107.0	63.8	52	23.5	20.5	21-TR2-11-050040	0.17
63/20	64.5	128.6	80.8	29	27.5	14.5	21-TR2-11-063020	0.27
63/25	64.5	128.6	80.8	35	27.5	16	21-TR2-11-063025	0.27
63/32	64.5	128.6	80.8	42.8	27.5	18	21-TR2-11-063032	0.27
63/40	64.5	128.6	80.8	52	27.5	20.5	21-TR2-11-063040	0.28
63/50	64.5	128.6	80.8	63.8	27.5	23.5	21-TR2-11-063050	0.28