

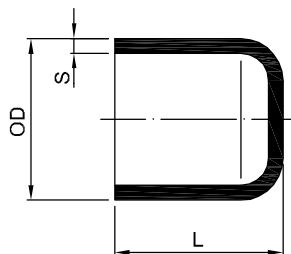


PP-H/PP-H(FRP COATED) PIPE FITTING VALVE

PP-H END CAP

elongated
for butt welding
molded from PP-H

對接管帽
DFP CP1



OD (mm)	L (mm)	SDR17.6 ISO S8.3 PN6		SDR11 ISO S5 PN10		SDR7.4 ISO S3.2 PN16	
		Code	S (mm)	Code	S (mm)	Code	S (mm)
20	42.0	-	-	21-CP1-0020-11	2.5	21-CP1-0020-7.25	2.8
25	50.0	-	-	21-CP1-0025-11	2.7	21-CP1-0025-7.25	3.5
32	55.0	-	-	21-CP1-0032-11	3.0	21-CP1-0032-7.25	4.5
40	60.0	-	-	21-CP1-0040-11	3.7	21-CP1-0040-7.25	5.6
50	60.0	21-CP1-0050-17.6	2.9	21-CP1-0050-11	4.6	21-CP1-0050-7.25	6.9
63	70.0	21-CP1-0063-17.6	3.6	21-CP1-0063-11	5.8	21-CP1-0063-7.25	8.7
75	80.0	21-CP1-0075-17.6	4.3	21-CP1-0075-11	6.9	21-CP1-0075-7.25	10.4
90	90.0	21-CP1-0090-17.6	5.1	21-CP1-0090-11	8.2	21-CP1-0090-7.25	12.5
110	100.0	21-CP1-0110-17.6	6.3	21-CP1-0110-11	10.0	21-CP1-0110-7.25	15.2
125	110.0	21-CP1-0125-17.6	7.1	21-CP1-0125-11	11.4	21-CP1-0125-7.25	-
140	144.0	21-CP1-0140-17.6	8.0	21-CP1-0140-11	12.8	21-CP1-0140-7.25	-
160	167.0	21-CP1-0160-17.6	9.1	21-CP1-0160-11	14.6	21-CP1-0160-7.25	-
180	191.0	21-CP1-0180-17.6	10.2	21-CP1-0180-11	16.4	21-CP1-0180-7.25	-
200	181.0	21-CP1-0200-17.6	11.4	21-CP1-0200-11	18.2	21-CP1-0200-7.25	-
225	211.5	21-CP1-0225-17.6	12.8	21-CP1-0225-11	20.5	21-CP1-0225-7.25	-
250	230.0	21-CP1-0250-17.6	14.2	21-CP1-0250-11	22.8	21-CP1-0250-7.25	-
280	257.0	21-CP1-0280-17.6	15.9	21-CP1-0280-11	25.5	21-CP1-0280-7.25	-
315	262.0	21-CP1-0315-17.6	17.9	21-CP1-0315-11	28.7	21-CP1-0315-7.25	-
355	130.0	21-CP1-0355-17.6	20.1	21-CP1-0355-11	32.3	21-CP1-0355-7.25	-
400	130.0	21-CP1-0400-17.6	22.7	21-CP1-0400-11	36.4	21-CP1-0400-7.25	-
450	130.0	21-CP1-0450-17.6	25.5	21-CP1-0450-11	41.0	21-CP1-0450-7.25	-
500	150.0	21-CP1-0500-17.6	28.3	21-CP1-0500-11	45.5	21-CP1-0500-7.25	-
560	150.0	21-CP1-0560-17.6	31.7	21-CP1-0560-11	50.9	21-CP1-0560-7.25	-
630	160.0	21-CP1-0630-17.6	35.7	21-CP1-0630-11	57.2	21-CP1-0630-7.25	-
710	160.0	21-CP1-0710-17.6	40.2	21-CP1-0710-11	64.5	21-CP1-0710-7.25	-
800	160.0	21-CP1-0800-17.6	45.5	21-CP1-0800-11	72.7	21-CP1-0800-7.25	-
900	160.0	21-CP1-0900-17.6	51.2	21-CP1-0900-11	81.8	21-CP1-0900-7.25	-
1000	160.0	21-CP1-1000-17.6	56.8	21-CP1-1000-11	90.9	21-CP1-1000-7.25	-
1200	160.0	21-CP1-1200-17.6	68.1	21-CP1-1200-11	109.0	21-CP1-1200-7.25	-