

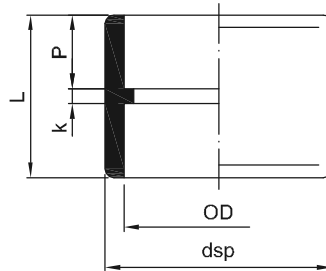


# PP-H/PP-H(FRP COATED) PIPE FITTING VALVE

## PP-H SOCKET

for socket welding  
molded from PP-H

平接頭  
DFP CL2

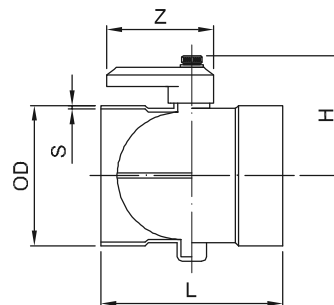


OD (mm)	dsp (mm)	k (mm)	P (mm)	L (mm)	SDR 7 ISO S5 PN10	
					Code	Weight (kg/Pc.)
16	24.0	4.1	14.7	33.5	21-CL2-11-0016	0.008
20	28.5	4.0	15.5	35.0	21-CL2-11-0020	0.012
25	34.5	5.0	17.0	39.0	21-CL2-11-0025	0.018
32	43.0	4.1	19.7	43.5	21-CL2-11-0032	0.026
40	51.5	4.0	21.5	47.0	21-CL2-11-0040	0.038
50	63.7	5.5	24.0	53.5	21-CL2-11-0050	0.062
63	79.5	5.0	28.0	61.0	21-CL2-11-0063	0.110
75	91.0	5.0	32.5	70.0	21-CL2-11-0075	0.144
90	111.0	6.0	36.5	79.0	21-CL2-11-0090	0.268
110	132.0	7.0	42.5	92.0	21-CL2-11-0110	0.372

## PP-H THROTTLE VALVE

elongated  
molded from PP-H

風閥  
DFP VA1



OD (mm)	H (mm)	L (mm)	Z (mm)	SDR26 ISO S12.5 PN4		
				Code	S (mm)	Weight (kg/Pc.)
75	88	95	88.5	21-VA1-17-0075	4.3	0.10
90	95	100	88.5	21-VA1-17-0090	5.1	0.18
110	107	150	88.5	21-VA1-17-0110	4.0	0.27
140	120	153	88.5	21-VA1-17-0140	5.4	0.45
160	132	150	88.5	21-VA1-17-0160	4.0	0.39
200	150	195	88.5	21-VA1-17-0200	7.7	1.26