



PP-H/PP-H(FRP COATED) PIPE FITTING VALVE

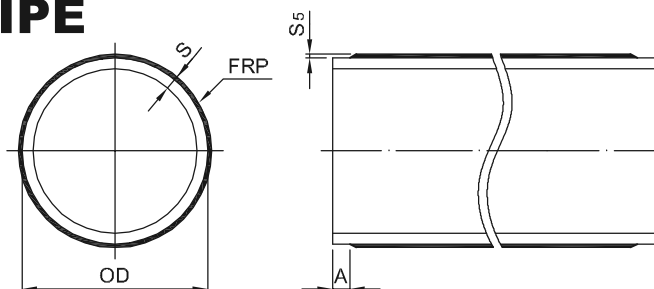
PP-H(FRP COATED)PIPE

DIN 8077/8078

Storage length:5m

(Special lengths on request)

直管 PP-H(FRP COATED)PIPE
DFP PIO



OD (mm)	Ventilation				S5 FRP (mm)	A (mm)	SDR41 ISO S20 PN2.5		SDR33 ISO S16 PN3.2		SDR26 ISO S12.5 PN4	
	S (mm)	Weight (kg/m)	S (mm)	Weight (kg/m)			Code	S (mm)	Code	S (mm)	Code	S (mm)
10	-	-	-	-	2	20	-	-	-	-	-	-
12	-	-	-	-	2	20	-	-	-	-	-	-
16	-	-	-	-	2	20	-	-	-	-	-	-
20	-	-	-	-	2	25	-	-	-	-	-	-
25	-	-	-	-	2	30	-	-	-	-	-	-
32	-	-	-	-	2	35	-	-	-	-	-	-
40	-	-	-	-	2	35	-	-	-	-	23-PIO-26-0040	3.8
50	-	-	-	-	2	35	-	-	23-PIO-33-0050	3.8	23-PIO-26-0050	4.0
63	-	-	-	-	3	35	23-PIO-41-0063	4.8	23-PIO-33-0063	5.0	23-PIO-26-0063	5.5
75	-	-	-	-	3	40	23-PIO-41-0075	4.9	23-PIO-33-0075	5.3	23-PIO-26-0075	5.9
90	-	-	-	-	3	40	23-PIO-41-0090	5.2	23-PIO-33-0090	5.8	23-PIO-26-0090	6.5
110	-	-	-	-	3	40	23-PIO-41-0110	5.7	23-PIO-33-0110	6.4	23-PIO-26-0110	7.2
125	-	-	-	-	3	45	23-PIO-41-0125	6.1	23-PIO-33-0125	6.9	23-PIO-26-0125	7.8
140	-	-	-	-	3	50	23-PIO-41-0140	6.5	23-PIO-33-0140	7.3	23-PIO-26-0140	8.4
160	-	-	-	-	3	55	23-PIO-41-0160	7.0	23-PIO-33-0160	7.9	23-PIO-26-0160	9.2
180	-	-	-	-	3	55	23-PIO-41-0180	7.4	23-PIO-33-0180	8.5	23-PIO-26-0180	9.9
200	-	-	-	-	3	60	23-PIO-41-0200	7.9	23-PIO-33-0200	9.2	23-PIO-26-0200	10.7
225	-	-	-	-	3	70	23-PIO-41-0225	8.5	23-PIO-33-0225	9.9	23-PIO-26-0225	11.6
250	-	-	-	-	5	70	23-PIO-41-0250	11.2	23-PIO-33-0250	12.7	23-PIO-26-0250	14.6
280	-	-	-	-	5	80	23-PIO-41-0280	11.9	23-PIO-33-0280	13.6	23-PIO-26-0280	15.7
315	-	-	-	-	5	90	23-PIO-41-0315	12.7	23-PIO-33-0315	14.7	23-PIO-26-0315	17.1
355	-	-	-	-	5	100	23-PIO-41-0355	13.7	23-PIO-33-0355	15.9	23-PIO-26-0355	18.6
400	6.0	7.2	8.0	9.7	5	110	23-PIO-41-0400	14.8	23-PIO-33-0400	17.3	23-PIO-26-0400	20.3
450	6.0	8.2	8.0	11.0	5	120	23-PIO-41-0450	16.0	23-PIO-33-0450	18.8	23-PIO-26-0450	22.2
500	8.0	11.9	10.0	15.1	8	140	23-PIO-41-0500	20.3	23-PIO-33-0500	23.3	23-PIO-26-0500	27.1
560	8.0	13.4	-	-	8	150	23-PIO-41-0560	21.7	23-PIO-33-0560	25.2	23-PIO-26-0560	29.4
630	10.0	18.8	-	-	8	170	23-PIO-41-0630	23.4	23-PIO-33-0630	27.3	23-PIO-26-0630	32.1
710	12.0	25.3	-	-	8	180	23-PIO-41-0710	25.4	23-PIO-33-0710	29.8	23-PIO-26-0710	35.2
800	12.0	28.6	-	-	8	210	23-PIO-41-0800	27.6	23-PIO-33-0800	32.5	23-PIO-26-0800	38.6
900	15.0	40.2	-	-	12	230	23-PIO-41-0900	34.0	23-PIO-33-0900	39.6	23-PIO-26-0900	46.4
1000	15.0	44.7	-	-	12	240	23-PIO-41-1000	36.5	23-PIO-33-1000	42.6	23-PIO-26-1000	50.2
1200	18.0	64.1	-	-	12	260	23-PIO-41-1200	41.4	23-PIO-33-1200	48.7	23-PIO-26-1200	-



PP-H/PP-H(FRP COATED) PIPE FITTING VALVE

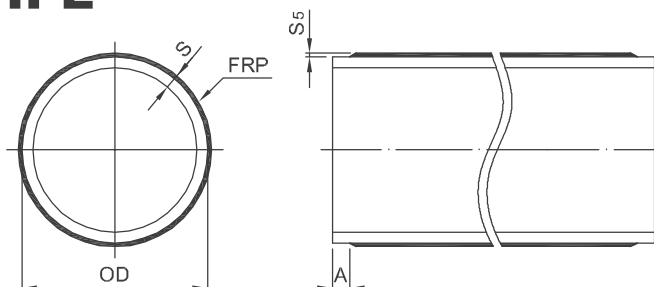
PP-H(FRP COATED)PIPE

DIN 8077/8078

Storage length:5m

(Special lengths on request)

直管 PP-H(FRP COATED)PIPE
DFP PIO



OD (mm)	Ventilation				S5 FRP (mm)	A (mm)	SDR17.6 ISO S8.3 PN6		SDR11 ISO S5 PN10		SDR7.4 ISO S3.2 PN16	
	S (mm)	Weight (kg/m)	S (mm)	Weight (kg/m)			Code	S (mm)	Code	S (mm)	Code	S (mm)
10	-	-	-	-	2	20	-	-	-	-	23-PIO-07-0010	3.8
12	-	-	-	-	2	20	-	-	-	-	23-PIO-07-0012	3.8
16	-	-	-	-	2	20	-	-	23-PIO-11-0016	3.8	23-PIO-07-0016	4.3
20	-	-	-	-	2	25	23-PIO-17-0020	3.8	23-PIO-11-0020	3.9	23-PIO-07-0020	4.8
25	-	-	-	-	2	30	23-PIO-17-0025	3.8	23-PIO-11-0025	4.3	23-PIO-07-0025	5.5
32	-	-	-	-	2	35	23-PIO-17-0032	4.0	23-PIO-11-0032	4.9	23-PIO-07-0032	6.4
40	-	-	-	-	2	35	23-PIO-17-0040	4.3	23-PIO-11-0040	5.7	23-PIO-07-0040	7.5
50	-	-	-	-	2	35	23-PIO-17-0050	4.9	23-PIO-11-0050	6.6	23-PIO-07-0050	8.9
63	-	-	-	-	3	35	23-PIO-17-0063	6.6	23-PIO-11-0063	8.8	23-PIO-07-0063	11.6
75	-	-	-	-	3	40	23-PIO-17-0075	7.3	23-PIO-11-0075	9.8	23-PIO-07-0075	13.3
90	-	-	-	-	3	40	23-PIO-17-0090	8.1	23-PIO-11-0090	11.2	23-PIO-07-0090	15.3
110	-	-	-	-	3	40	23-PIO-17-0110	9.3	23-PIO-11-0110	13.0	23-PIO-07-0110	18.1
125	-	-	-	-	3	45	23-PIO-17-0125	10.1	23-PIO-11-0125	14.4	23-PIO-07-0125	20.1
140	-	-	-	-	3	50	23-PIO-17-0140	11.0	23-PIO-11-0140	15.7	23-PIO-07-0140	22.2
160	-	-	-	-	3	55	23-PIO-17-0160	12.1	23-PIO-11-0160	17.6	23-PIO-07-0160	24.9
180	-	-	-	-	3	55	23-PIO-17-0180	13.2	23-PIO-11-0180	19.4	23-PIO-07-0180	27.83
200	-	-	-	-	3	60	23-PIO-17-0200	14.4	23-PIO-11-0200	21.2	23-PIO-07-0200	30.47
225	-	-	-	-	3	70	23-PIO-17-0225	15.8	23-PIO-11-0225	23.5	23-PIO-07-0225	34.03
250	-	-	-	-	5	70	23-PIO-17-0250	19.2	23-PIO-11-0250	27.7	23-PIO-07-0250	39.48
280	-	-	-	-	5	80	23-PIO-17-0280	20.9	23-PIO-11-0280	30.4	23-PIO-07-0280	43.62
315	-	-	-	-	5	90	23-PIO-17-0315	22.9	23-PIO-11-0315	33.6	23-PIO-07-0315	48.45
355	-	-	-	-	5	100	23-PIO-17-0355	25.1	23-PIO-11-0355	37.2	-	-
400	6.0	7.2	8.0	9.7	5	110	23-PIO-17-0400	27.7	23-PIO-11-0400	41.3	-	-
450	6.0	8.2	8.0	11.0	5	120	23-PIO-17-0450	30.5	23-PIO-11-0450	45.9	-	-
500	8.0	11.9	10.0	15.1	8	140	23-PIO-17-0500	36.3	23-PIO-11-0500	53.4	-	-
560	8.0	13.4	-	-	8	150	23-PIO-17-0560	39.7	23-PIO-11-0560	-	-	-
630	10.0	18.8	-	-	8	170	23-PIO-17-0630	43.7	23-PIO-11-0630	-	-	-
710	12.0	25.3	-	-	8	180	23-PIO-17-0710	48.2	23-PIO-11-0710	-	-	-
800	12.0	28.6	-	-	8	210	23-PIO-17-0800	53.3	23-PIO-11-0800	-	-	-
900	15.0	40.2	-	-	12	230	23-PIO-17-0900	63.2	23-PIO-11-0900	-	-	-
1000	15.0	44.7	-	-	12	240	23-PIO-17-1000	68.8	23-PIO-11-1000	-	-	-
1200	18.0	64.1	-	-	12	260	23-PIO-17-1200	80.1	23-PIO-11-1200	-	-	-