



# HD-PE

# PIPE FITTING VALVE

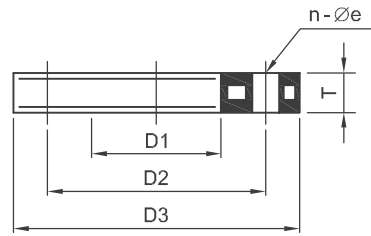
## BACKING RING

acc.to ANSI standard

PP grey

法蘭鐵片150#

DFP FHA



OD (inch)	D1 (mm)	D2		D3 (mm)	e (mm)	n Number	T (mm)	SDR11 ISO S5 PN10
		(mm)	(inch)					Code
1/2"	28	60.50	2-3/8"	89	16	4	12	31-FHA-11-0020
3/4"	34	69.85	2-3/4"	98	16	4	12	31-FHA-11-0025
1"	42	79.25	3-1/8"	108	16	4	16	31-FHA-11-0032
1-1/4"	51	88.90	3-1/2"	117	16	4	16	31-FHA-11-0040
1-1/2"	62	98.55	3-7/8"	127	16	4	18	31-FHA-11-0050
2"	78	120.65	4-3/4"	152	19	4	18	31-FHA-11-0063
2-1/2"	92	139.70	5-1/2"	178	19	4	18	31-FHA-11-0075
3"	111	152.40	6"	191	19	4	20	31-FHA-11-0090
4"	133	190.50	7-1/2"	229	19	8	20	31-FHA-11-0110
5"	133	190.50	7-1/2"	254	22	8	20	31-FHA-11-0125
6"	178	241.00	9-1/2"	279	22	8	24	31-FHA-11-0160
8"	236	298.45	11-3/4"	343	22	8	28	31-FHA-11-0200
10"	288	361.95	14-1/4"	406	25	12	30	31-FHA-11-0250
12"	338	431.80	17"	483	25	12	32	31-FHA-11-0315
▲ 14"	376	476.25	18-3/4"	533	29	12	28	31-FHA-11-0355
▲ 16"	430	539.75	21-1/4"	597	29	16	28	31-FHA-11-0400
▲ 18"	517	577.85	22-3/4"	635	32	16	30	31-FHA-11-0450
▲ 20"	533	635.00	25"	699	32	20	30	31-FHA-11-0500
▲ 24"	645	749.30	29-1/2"	813	35	20	30	31-FHA-11-0630
▲ 28"	740	863.35	34"	928	35	24	30	31-FHA-11-0710
▲ 32"	840	977.90	38-1/2"	1060	41	24	36	31-FHA-11-0800
▲ 36"	950	1085.9	42-3/4"	1178	41	32	38	31-FHA-11-0900
▲ 40"	1050	1174.8	46-1/4"	1286	41	32	40	31-FHA-11-1000
▲ 44"	1155	1314.5	51-3/4"	1403	41	40	40	31-FHA-11-1100
▲ 48"	1260	1422.4	56"	1512	41	44	40	31-FHA-11-1200

▲ 鋼鐵製品 (Steel ones)



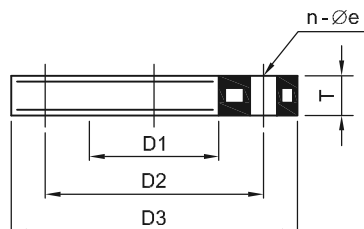
# HD-PE

# PIPE FITTING VALVE

## BACKING RING

With steel insert  
for steel beadings  
acc.to DIN PN10  
mold from PP grey PP black

法蘭鐵片  
DFP FHD



OD (mm)	D1 (mm)	D2 (mm)	D3 (mm)	T (mm)	e (mm)	n Number	SDR11 ISO S5 PN10
							Code
20	28	65	95	12	14	4	31-FHD-11-0020
25	34	75	105	12	14	4	31-FHD-11-0025
32	42	85	115	16	14	4	31-FHD-11-0032
40	51	100	140	16	18	4	31-FHD-11-0040
50	62	110	150	18	18	4	31-FHD-11-0050
63	78	125	165	18	18	4	31-FHD-11-0063
75	92	145	185	18	18	4	31-FHD-11-0075
90	108	160	200	20	18	8	31-FHD-11-0090
110	128	180	220	20	18	8	31-FHD-11-0110
140	158	210	250	22	18	8	31-FHD-11-0140
160	178	240	285	22	23	8	31-FHD-11-0160
180	188	240	285	22	23	8	31-FHD-11-0180
200	235	295	340	24	23	8	31-FHD-11-0200
225	238	295	340	24	23	8	31-FHD-11-0225
250	288	350	390	26	23	12	31-FHD-11-0250
280	294	350	395	26	23	12	31-FHD-11-0280
315	338	400	445	26	23	12	31-FHD-11-0315
▲ 355	376	460	505	28	30	16	31-FHD-11-0355
▲ 400	430	515	565	28	30	16	31-FHD-11-0400
▲ 450	517	620	670	30	30	20	31-FHD-11-0450
▲ 500	533	620	670	30	30	20	31-FHD-11-0500
▲ 560	618	725	780	30	30	20	31-FHD-11-0560
▲ 630	645	725	780	30	30	20	31-FHD-11-0630
▲ 710	740	840	895	30	30	24	31-FHD-11-0710
▲ 800	840	950	1015	36	33	24	31-FHD-11-0800
▲ 900	950	1050	1115	38	33	28	31-FHD-11-0900
▲ 1000	1050	1160	1230	40	36	28	31-FHD-11-1000
▲ 1100	1155	-	1403	40	36	-	31-FHD-11-1100
▲ 1200	1260	1380	1455	40	39	32	31-FHD-11-1200

▲ 鋼鐵製品(Steel ones)



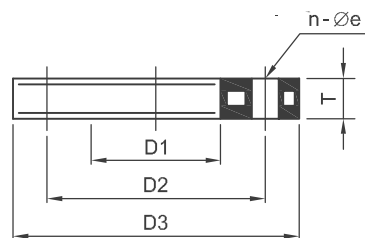
# HD-PE

# PIPE FITTING VALVE

## BACKING RING

acc.to JIS standard  
PP grey

法蘭鐵片10K  
DFP FHJ



DN (inch)	D1 (mm)	D2 (mm)	D3 (mm)	e (mm)	n Number	T (mm)	SDR11 ISO S5 PN10
							Code
1/2"	28	70	96	15	4	12	31-FHJ-11-0020
3/4"	34	75	100	15	4	14	31-FHJ-11-0025
1"	42	90	125	19	4	14	31-FHJ-11-0032
1-1/4"	51	100	135	19	4	14	31-FHJ-11-0040
1-1/2"	62	105	140	19	4	16	31-FHJ-11-0050
2"	78	120	155	19	4	16	31-FHJ-11-0063
2-1/2"	92	140	175	19	4	16	31-FHJ-11-0075
3"	110	150	185	19	8	18	31-FHJ-11-0090
4"	133	175	210	19	8	18	31-FHJ-11-0110
5"	160	210	250	23	8	20	31-FHJ-11-0140
6"	178	240	280	23	8	21	31-FHJ-11-0160
8"	238	290	330	23	12	21	31-FHJ-11-0225
10"	288	355	400	25	12	24	31-FHJ-11-0250
12"	338	400	445	25	16	26	31-FHJ-11-0315
▲ 14"	376	445	490	25	16	28	31-FHJ-11-0355
▲ 16"	430	510	560	27	16	28	31-FHJ-11-0400
▲ 18"	517	565	620	27	20	30	31-FHJ-11-0450
▲ 20"	533	620	675	27	20	30	31-FHJ-11-0500
▲ 24"	645	730	795	33	24	30	31-FHJ-11-0630
▲ 28"	740	840	905	33	24	30	31-FHJ-11-0710
▲ 32"	840	950	1020	33	28	36	31-FHJ-11-0800
▲ 36"	950	1050	1120	33	28	38	31-FHJ-11-0900
▲ 40"	1050	1160	1235	39	28	40	31-FHJ-11-1000
▲ 44"	1155	1275	1403	39	28	40	31-FHJ-11-1100
▲ 48"	1260	1380	1512	39	32	40	31-FHJ-11-1200

▲ 鋼鐵製品 (Steel ones)